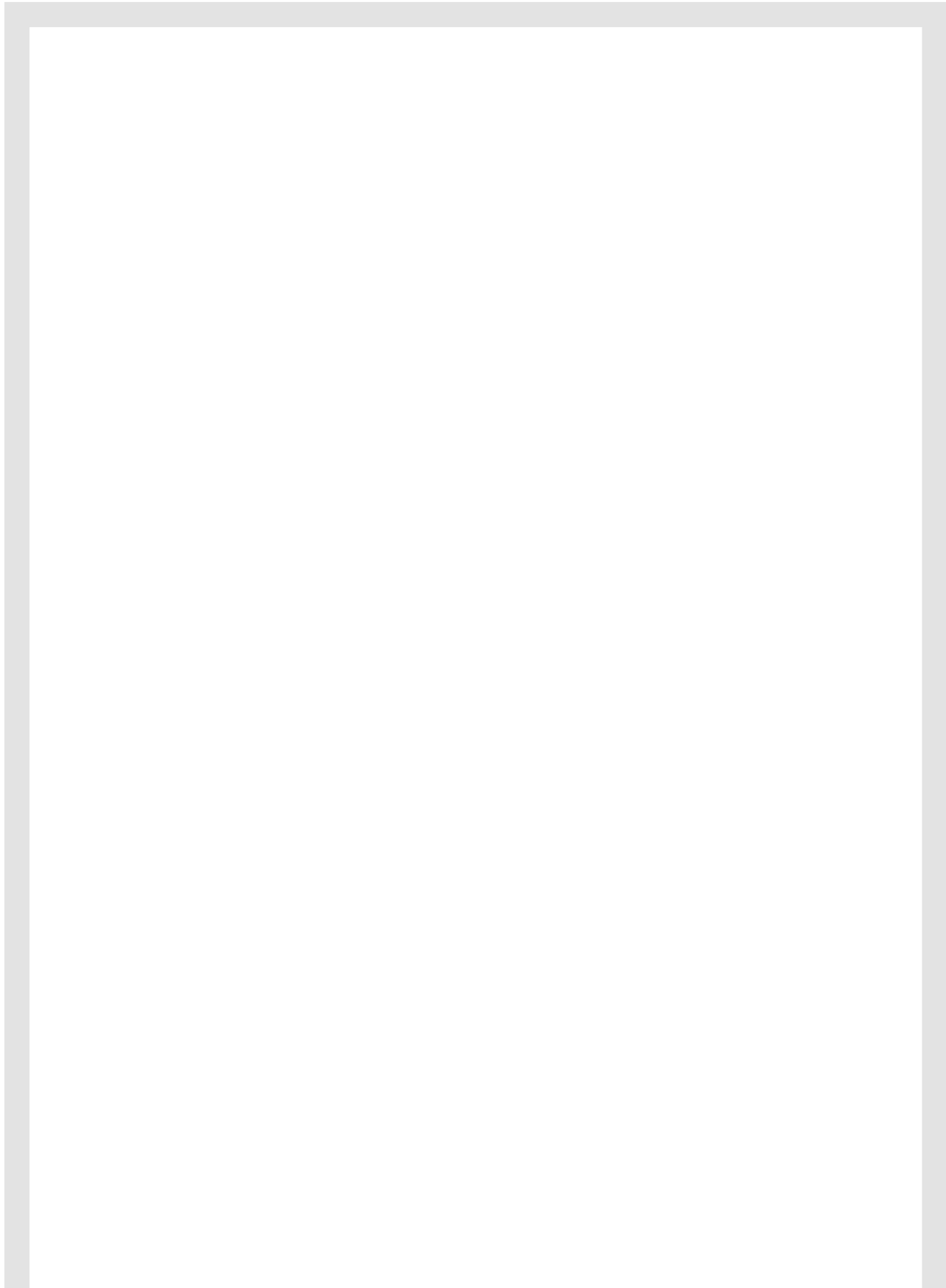


*Rasomuro*

**lualdi**

*Rasomuro*

**lualdi**

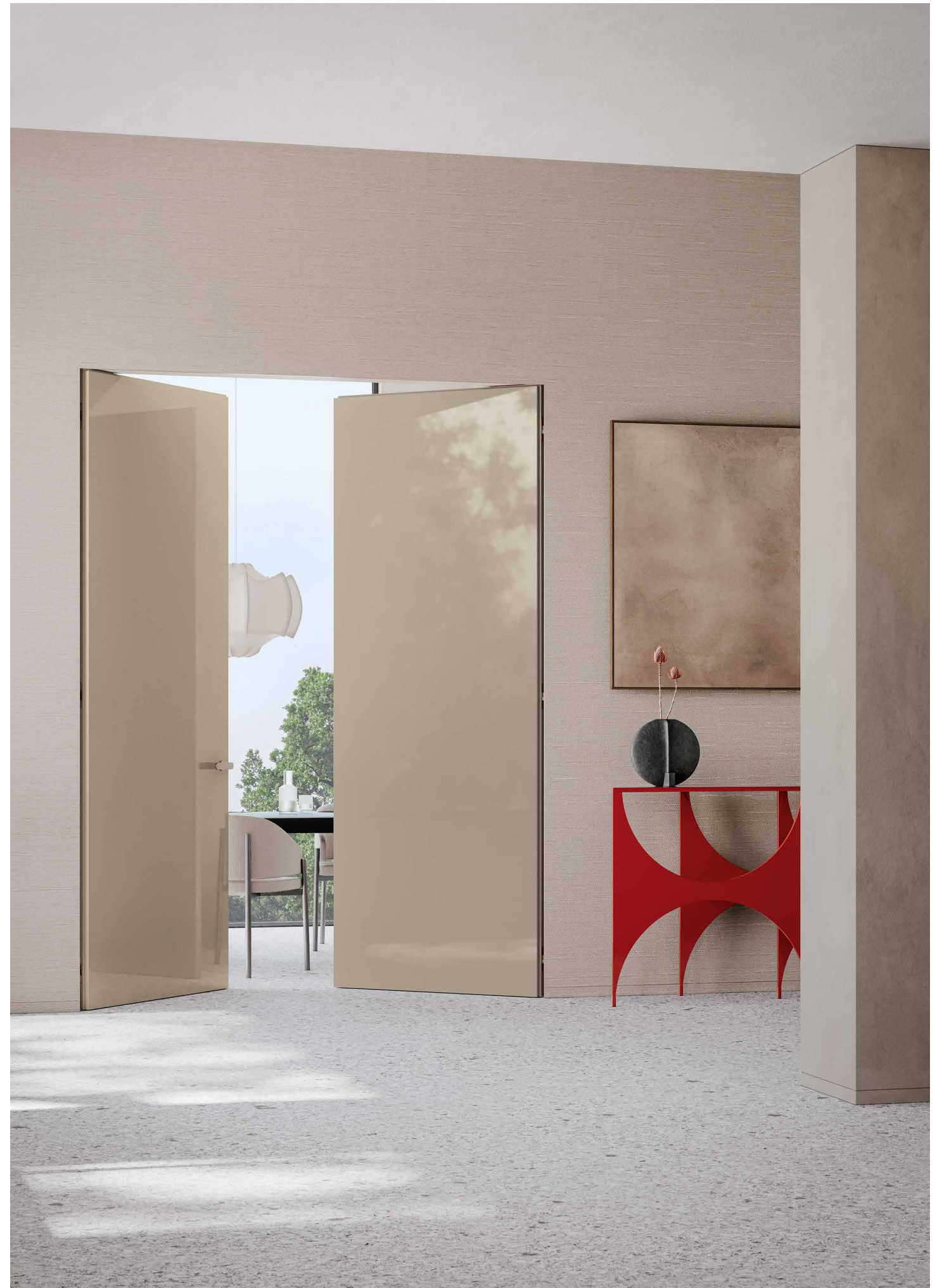


04	Rasomuro 55s
22	Rasovetro 55s
30	Rasoline 55s
40	Compass 55
48	Compassline 55
58	Altaj

### **Rasomuro 55s**

La collezione Rasomuro 55s rappresenta la naturale evoluzione del modello storico Rasomuro, di cui riprende le caratteristiche tecniche che ne hanno decretato il successo. Grazie alle cerniere completamente a scomparsa e allo stipite invisibile in alluminio, Rasomuro 55s è in grado di integrarsi alla parete con mimetismo perfetto, diventando un elemento architettonico di transito tra un ambiente e l'altro, grazie a un design esclusivo ed elusivo, quasi immateriale.

The Rasomuro 55s collection is the natural evolution of the historical Rasomuro model, from which it incorporates the technical features that were so pivotal to its success. Thanks to the concealed hinges and the invisible aluminium doorjamb, Rasomuro 55s assimilates with the wall with perfect camouflage. It becomes an architectural element that moves from one space to the next thanks to an elusive, exclusive and almost immaterial design.









Rasomuro 55s doppio battente  
in laccato lucido terra,  
con maniglia e telaio in alluminio  
finitura titanio.

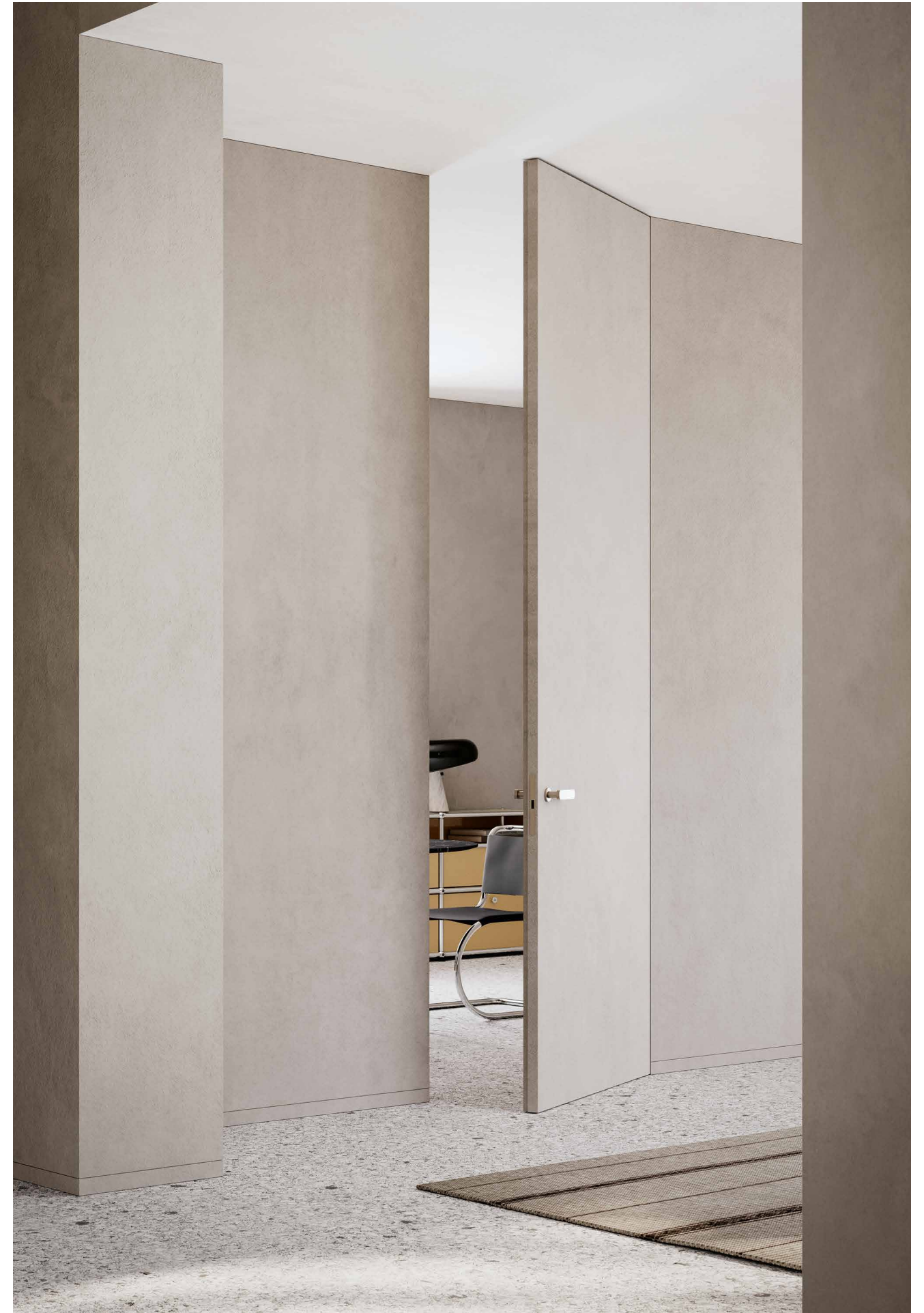
Rasomuro 55s double hinged  
in polished clay lacquer,  
with handle and frame in titanium.





Nella versione senza traverso superiore e anta grezza, Rasomuro 55s si integra perfettamente nella parete mimetizzandosi con l'ambiente.

In the version without upper header and primed door, Rasomuro 55s integrates perfectly into the wall, camouflaging itself with the environment.













Grazie alle cerniere completamente a scomparsa e allo stipite invisibile in alluminio, la porta in finitura laccato opaco bianco diventa vero e proprio elemento architettonico, rendendo lo spazio armonico e omogeneo.

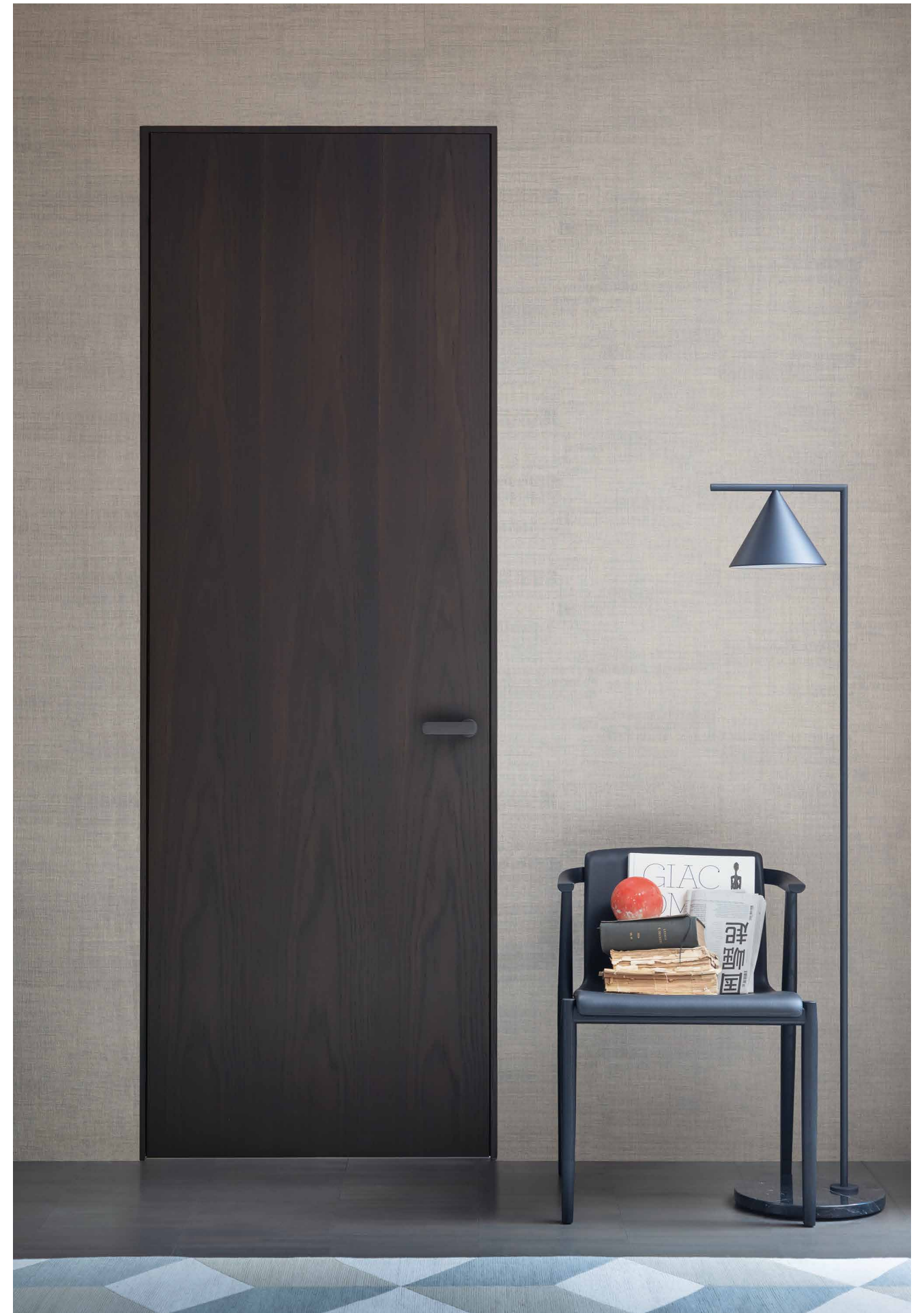
Thanks to the completely concealed hinges and the invisible aluminium jamb, the door in white matt lacquered finish becomes a real architectural element, making the space harmonious and homogeneous.



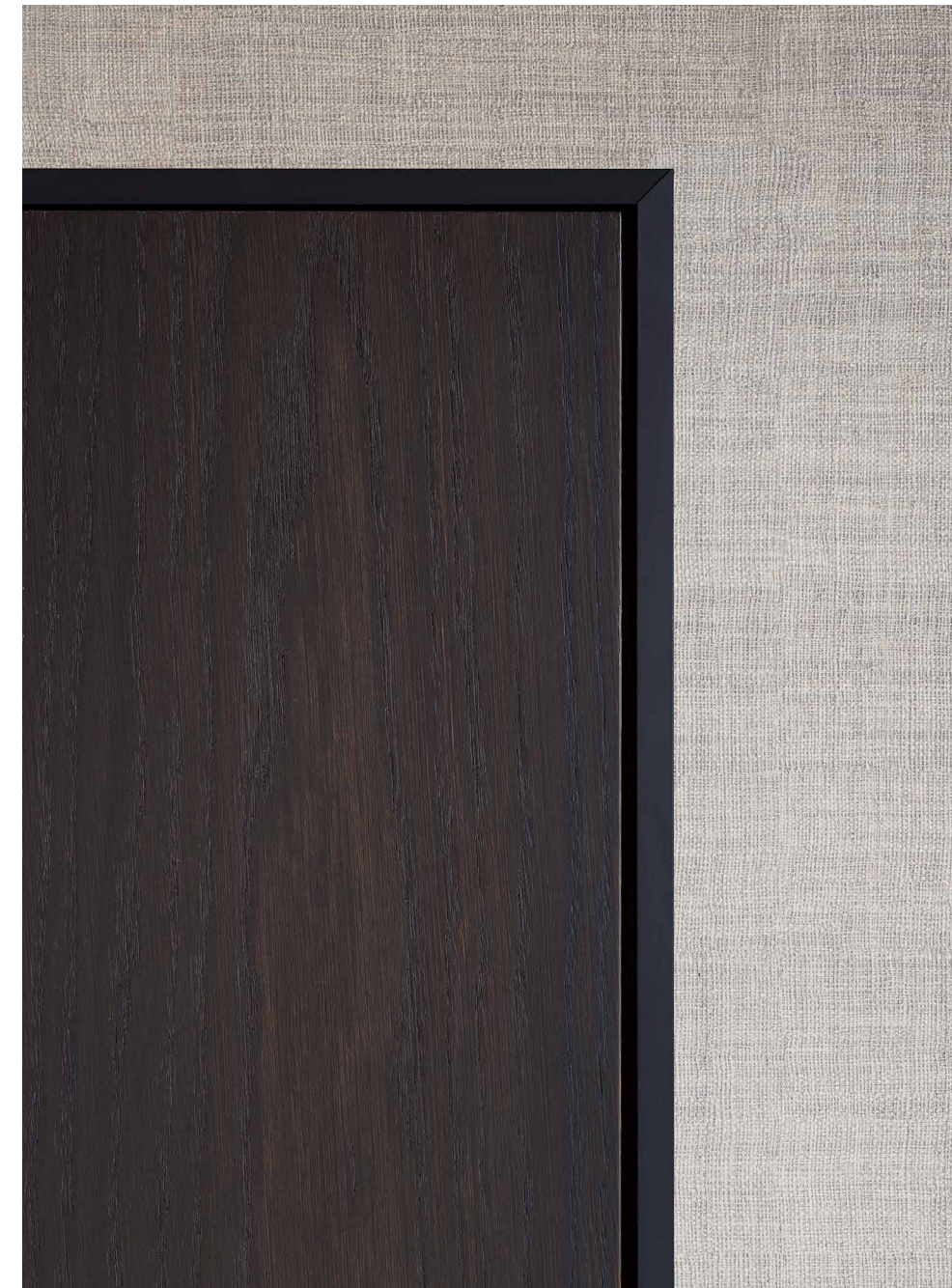
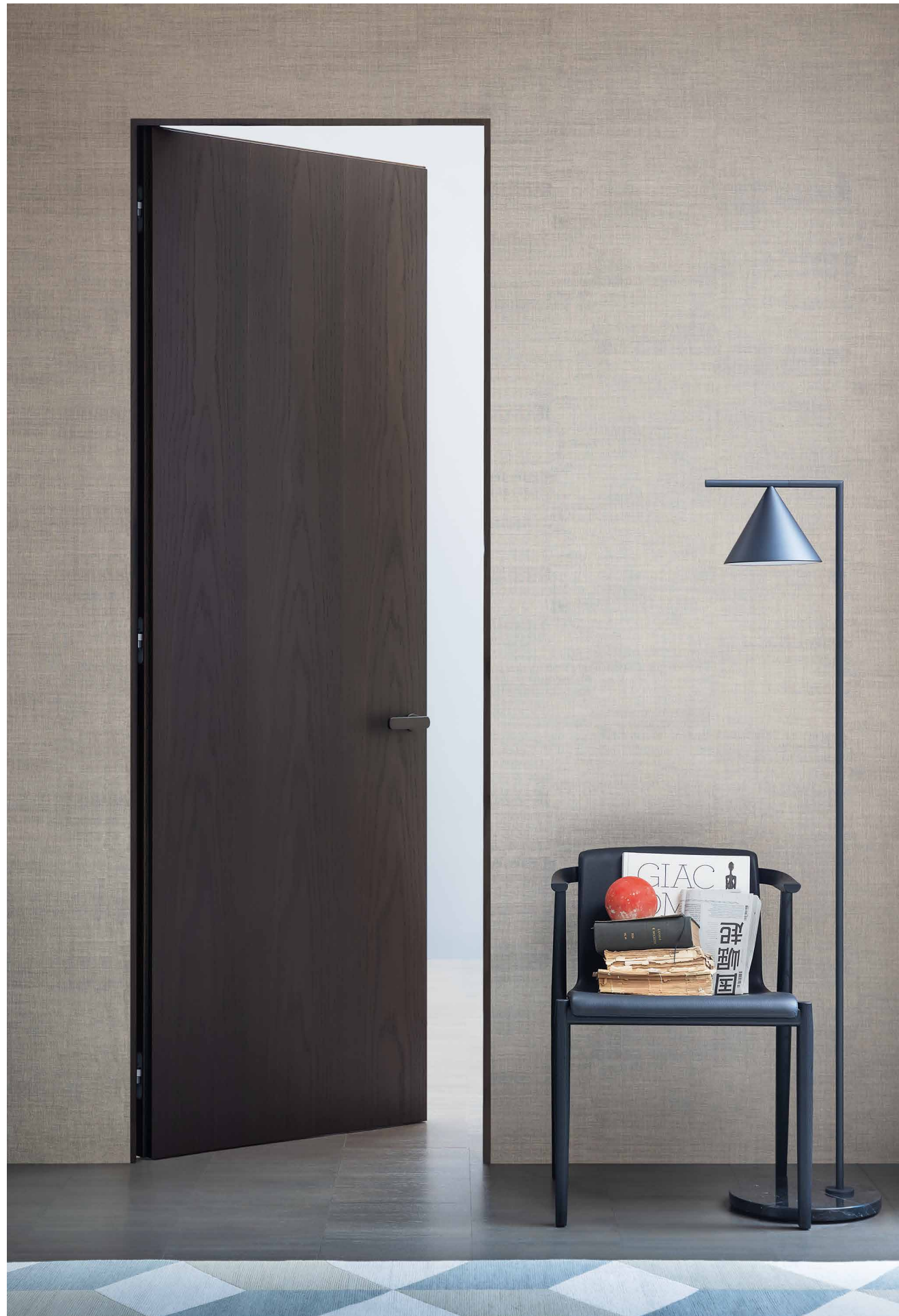


Nella versione con stipite  
Raso Usa, il profilo a vista  
in alluminio nero opaco delinea  
il perimetro della porta a filo  
parete e ne sottolinea la  
superficie.

In the Raso Usa jamb's variation,  
the black visible profile outlines  
the perimeter of the door  
that is flush with the wall and  
accentuates the surface.







Il profilo a vista della porta  
Raso USA in finitura alluminio  
nero opaco.

The visible profile of the  
Raso USA door in aluminium  
with a black finish.



### **Rasovetro 55s**

La collezione Rasovetro nasce dalla celebre Rasomuro e della famiglia ha tutte le caratteristiche, come le cerniere a scomparsa e lo stipite in alluminio. Esteticamente, invece, sviluppa la propria originalità grazie al vetro, materiale pulito per eccellenza, e alle sue prerogative uniche: trasparenza, luminosità, leggerezza.

The Rasovetro collection comes from the famous Rasomuro series and displays its same features, such as concealed hinges and aluminium jamb. From an aesthetical perspective, these doors develop their originality thanks to glass, a clean material by nature, and its unique prerogatives: transparency, brightness, lightness.







Rasovetro 55s con anta in  
finitura vetro grigio satinato,  
e profili e maniglia in alluminio  
nero opaco.

Rasovetro 55s with satin grey  
glass finishing door, and matt  
black aluminium profiles  
and handle.







Linee nitide e finiture sofisticate,  
così il modello Rasovetro 55s  
definisce e caratterizza gli spazi.

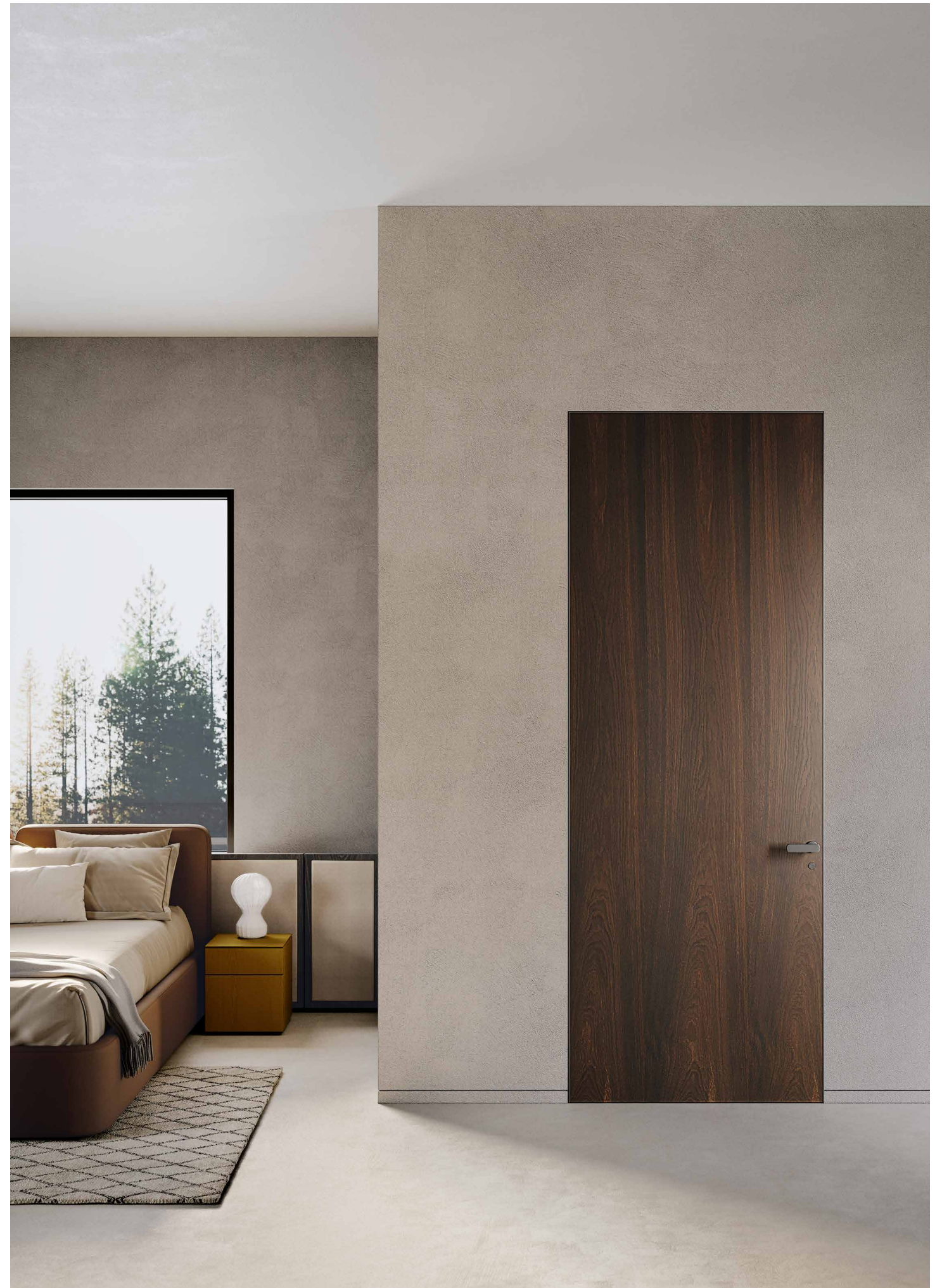
Sharp lines and sophisticated  
finishes: this is how the  
Rasovetro 55s model defines  
and characterises spaces.



### **Rasoline 55s**

Rasoline 55s è un'opera di design in stile contemporaneo che si integra perfettamente con la parete e l'architettura circostante. La collezione segna il passaggio da un ambiente all'altro indossando finiture diverse sulle superfici dei due lati, che dialogano quindi con l'ambiente assecondandone con eleganza le caratteristiche. A contenerle, un essenziale bordo metallico disponibile in diverse finiture, sia con funzione strutturale che decorativa.

The Rasoline 55s is contemporary-looking design work that integrates perfectly with the wall and surrounding architecture. It is a flush-to-the-wall swing door with a honeycombed panel and an aluminium frame. The collection marks the transition from one space to another by wearing different finishes on the surface of its two sides, which interact with the surrounding spaces, elegantly complementing their characteristics. An elemental metal edging available in different finishes contains them, showing both a structural and decorative function.

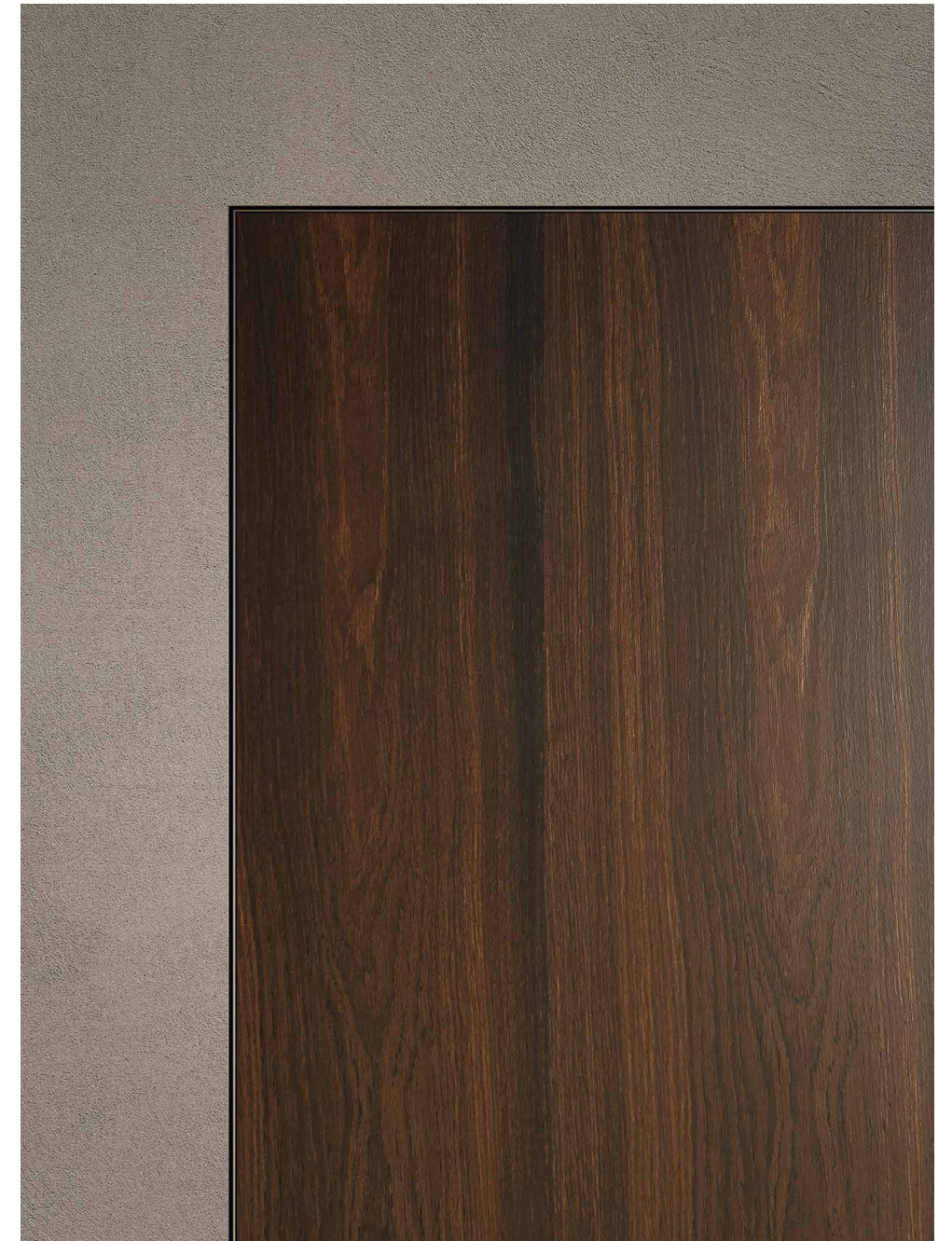






Grazie alla doppia finitura sui due lati dell'anta, Rasoline 55s definisce stili diversi in spazi adiacenti. Nella foto, anta in rovere thermowood con stipite e bordo anta in finitura piombo.

Thanks to the double finish on the two sides of the door, Rasoline 55s defines different styles in adjacent spaces. In the photo, thermowood oak door with lead-grey finish door frame and edge.

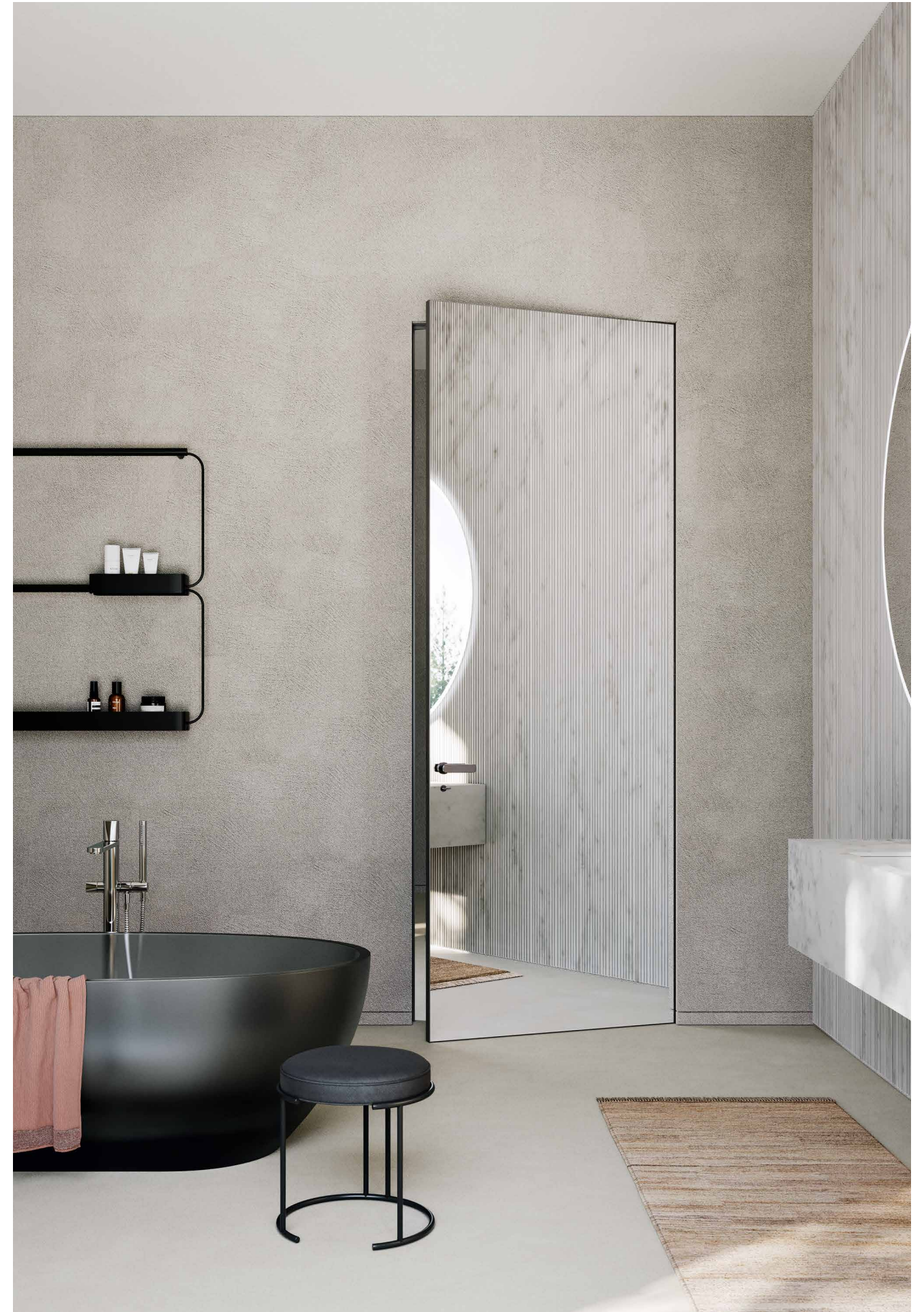






Con rivestimento in specchio e bordo in alluminio finitura piombo, Rasoline 55s appare in una nuova veste, donando profondità e luminosità al bagno interno alla camera.

With mirror coating and lead-finish aluminium trim, Rasoline 55s appears in a new guise, giving depth and brightness to the bathroom inside the room.











L'anta di Rasoline 55s da un lato è in rovere precomposto, dall'altro grezza verniciata come il muro. Lo stipite e il bordo metallico color bronzo ben si accordano alla qualità cromatica del legno.

One side of the Rasoline 55s door is oak veneered, while the other is left unfinished ready to be painted in the same color as the wall. The bronze colored metal jamb and edging coordinate with the color of the wood.



### **Compass 55**

Compass 55 è una porta per interni a bilico filo muro, disponibile nelle versioni con e senza battuta laterale. Perfettamente complanare e dotata di anta pivotante, Compass 55 ha l'aspetto di una quinta ampia e silenziosa, capace di mettere in comunicazione gli spazi con assoluta leggerezza.

Compass 55 is a flush-wall swing door for interiors, available in versions with and without a side stop. Perfectly coplanar and equipped with a pivoting door, Compass 55 looks like a large and silent theatre wing, able to connect spaces with absolute lightness.





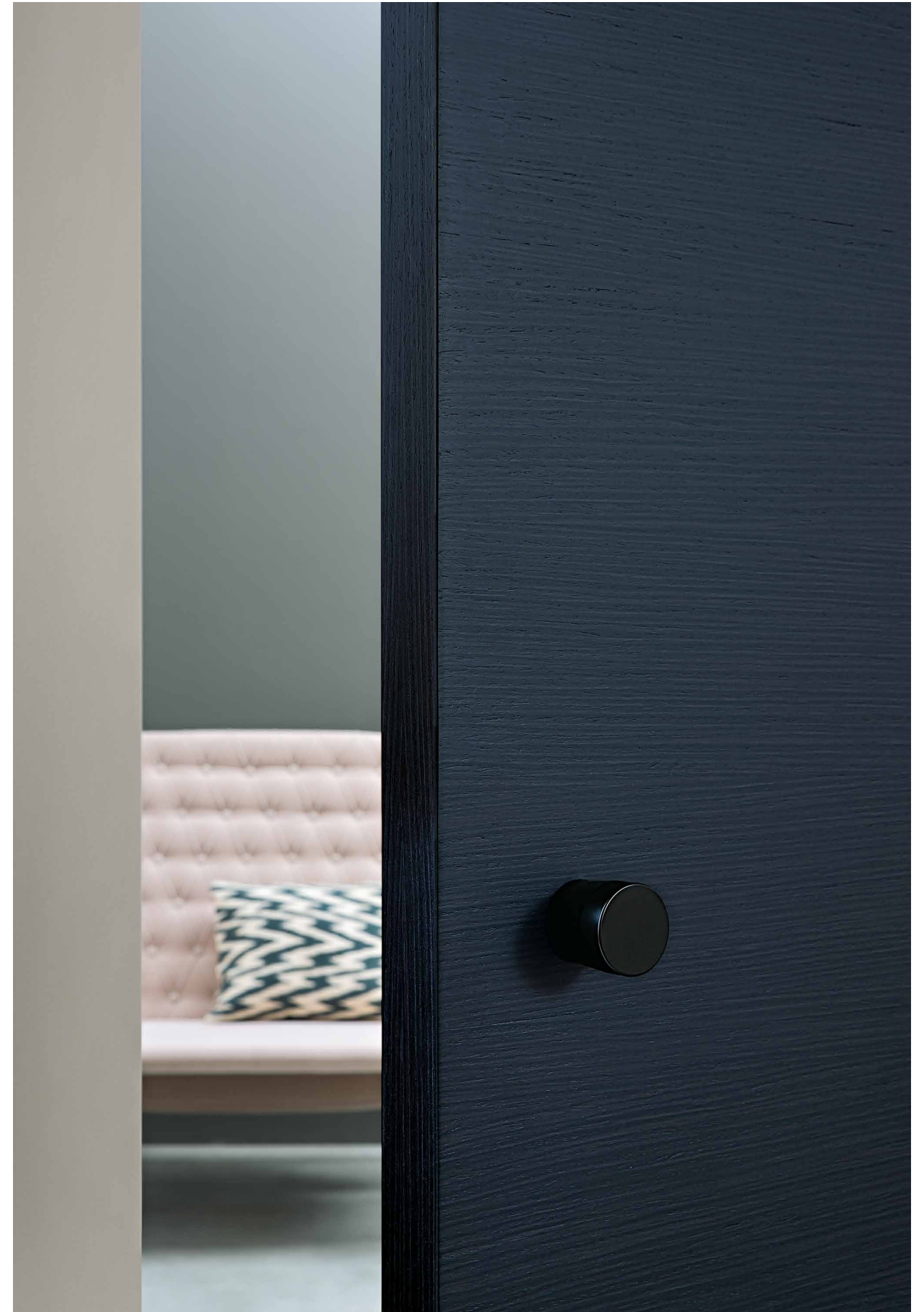






Lo spessore dell'anta pivotante di Compass 55, qui in versione rovere nero fossile.

The thickness of the pivoting Compass 55 door, here in black fossil oak version.









**Compassline 55**

Perfettamente allineata, dotata di anta pivotante, Compassline 55 conserva le medesime caratteristiche della collezione madre, col vantaggio di un'anta caratterizzata da una doppia finitura sui due lati.

Perfectly aligned, with a pivoting door, Compassline 55 retains the same characteristics of the mother collection, with the advantage of a door characterised by a double finish on both sides.



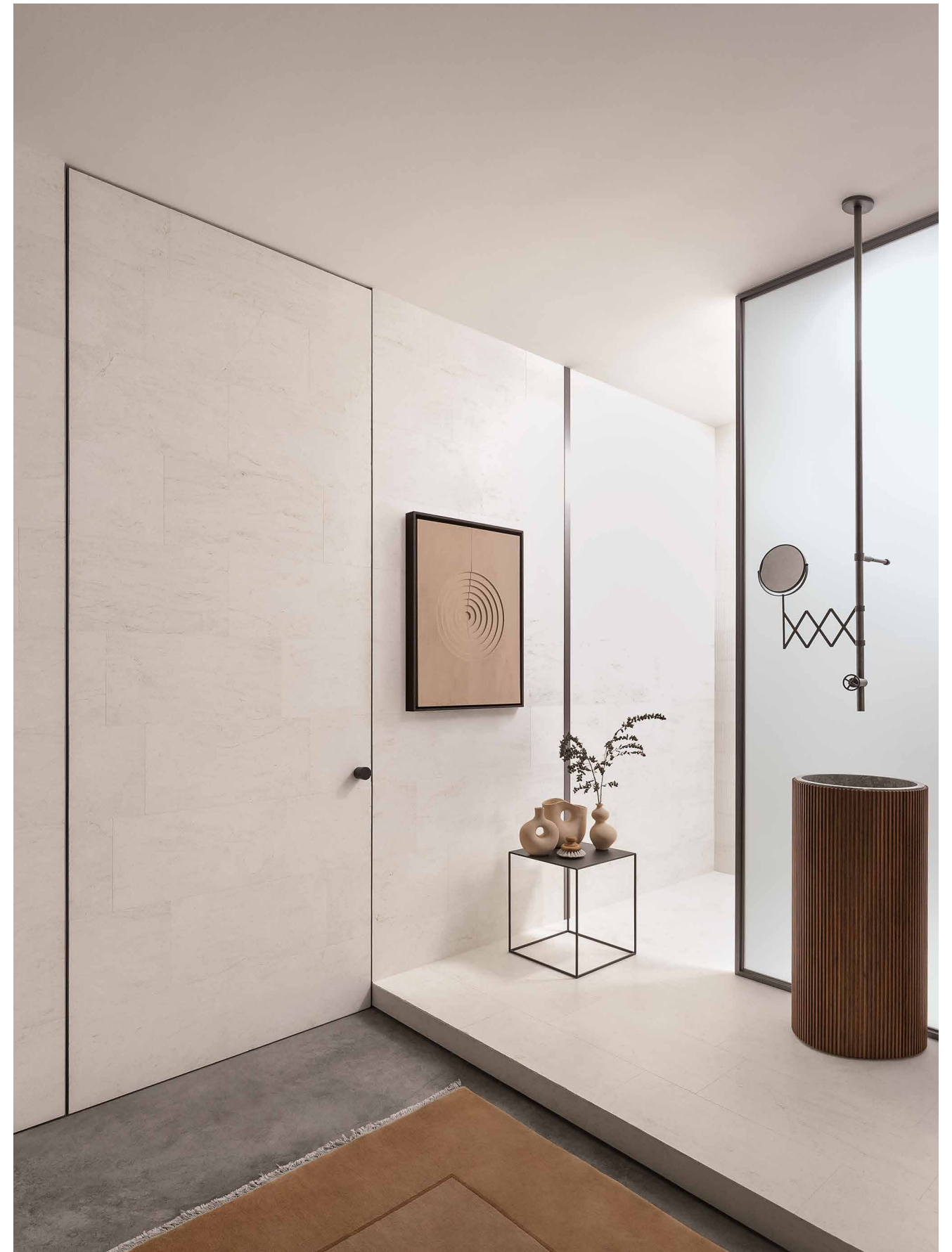
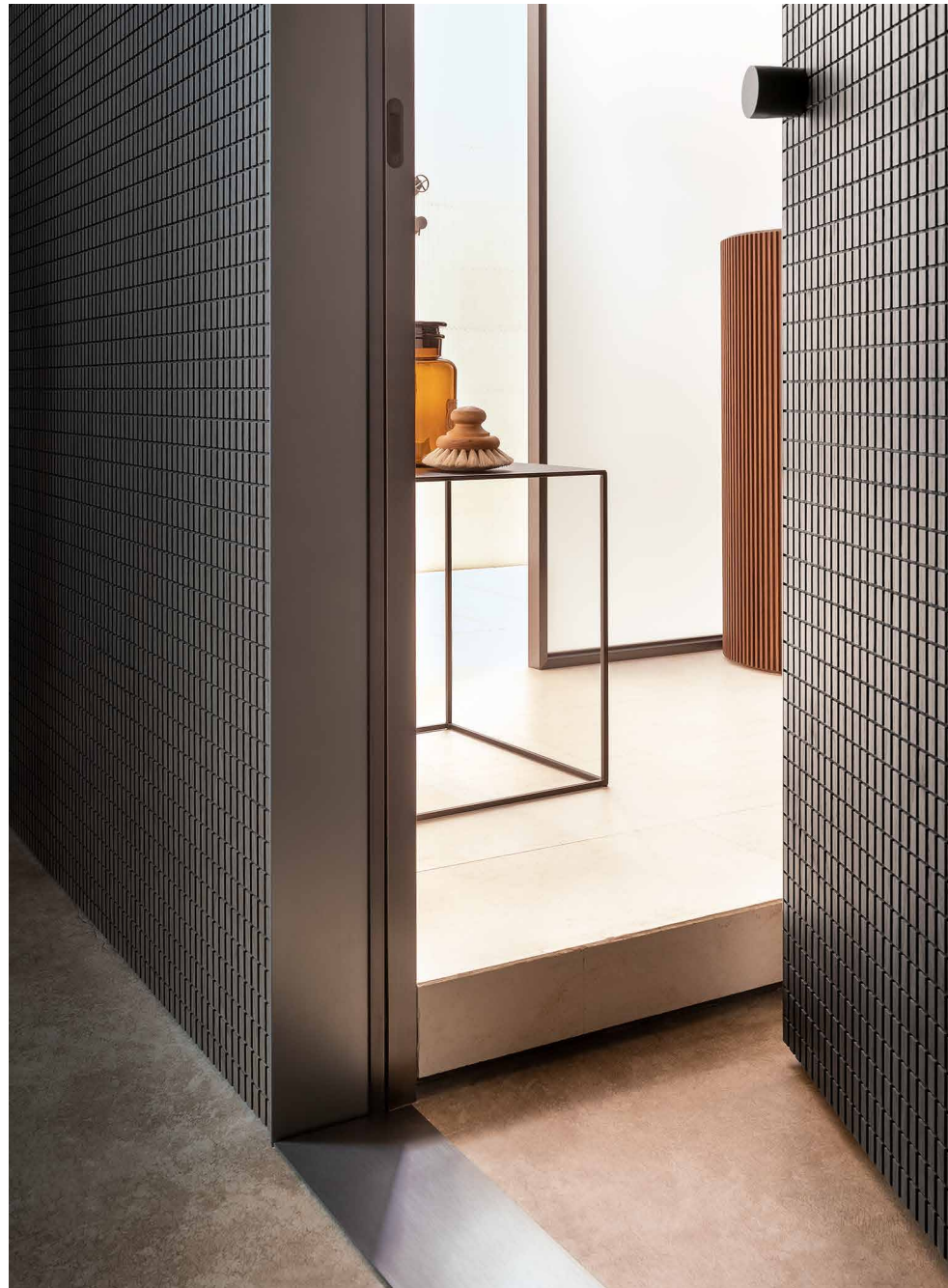


A sinistra: dettaglio dell'anta in finitura Chocolat R rovere grigio su nero fossile.

A destra: Compassline 55 con anta in versione customizzata finitura marmo, in continuità con le pareti circostanti.

On the left: detail of the door in Chocolat R grey oak finish on fossil black.

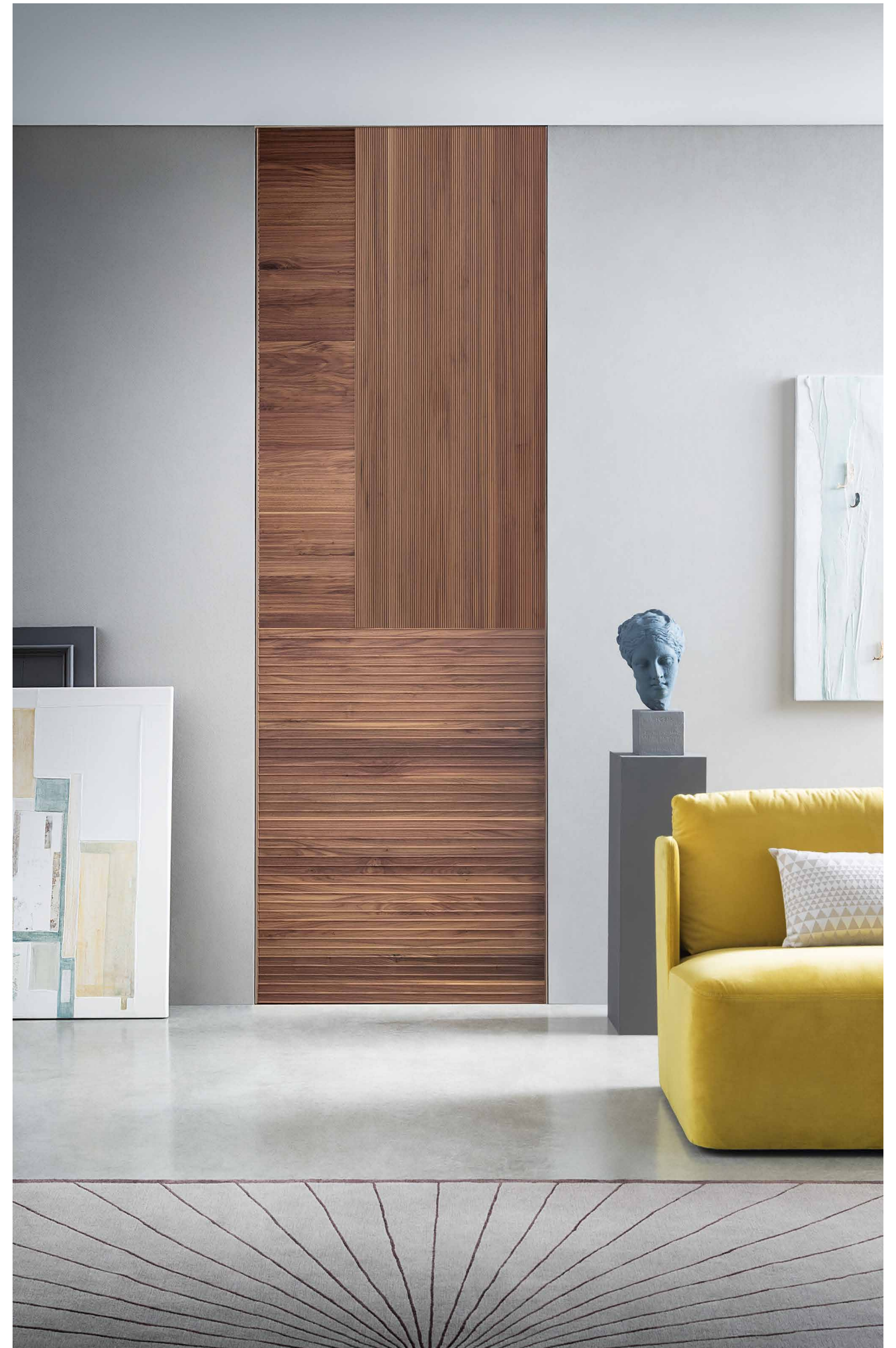
Right: Compassline 55 with a customised marble-finish door, in continuity with the surrounding walls.





L'anta pivotante Compassline 55 con finitura Matrix creata dall'accostamento di tre intagli diversi e profilo in bronzo.

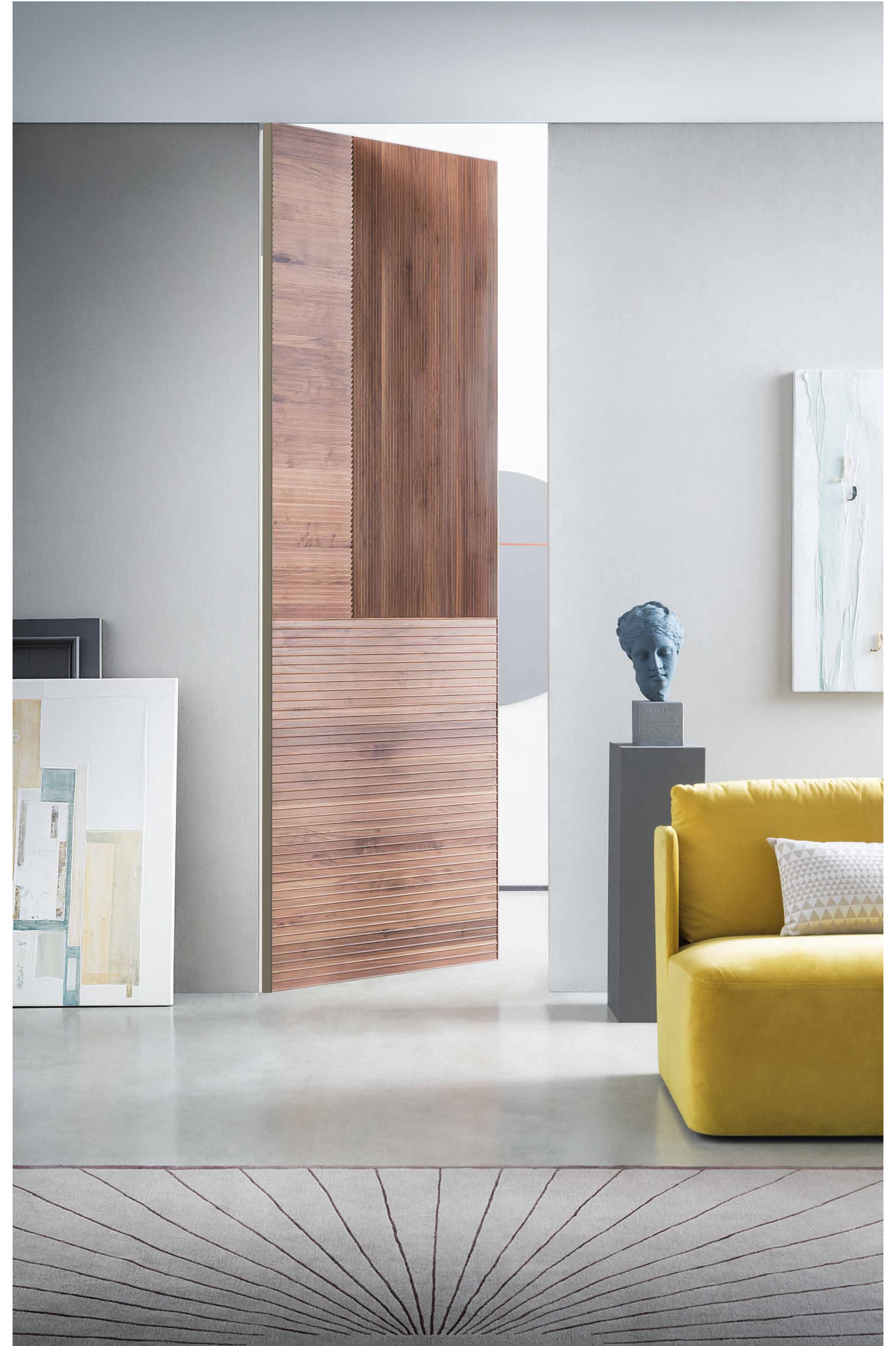
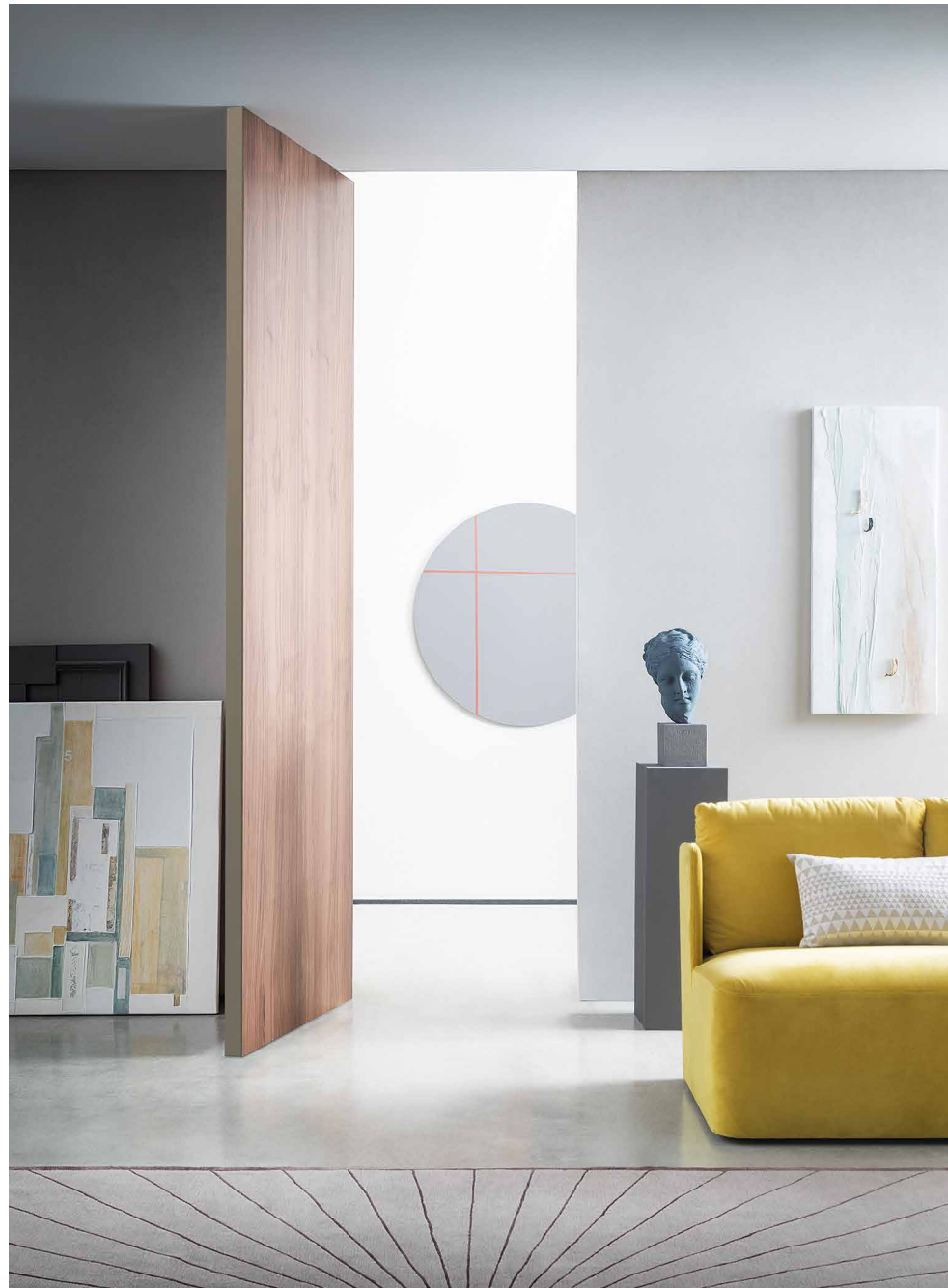
The pivoting door of the Compassline 55 with a Matrix finish created by the combination of three different forms of milling and a bronze profile.



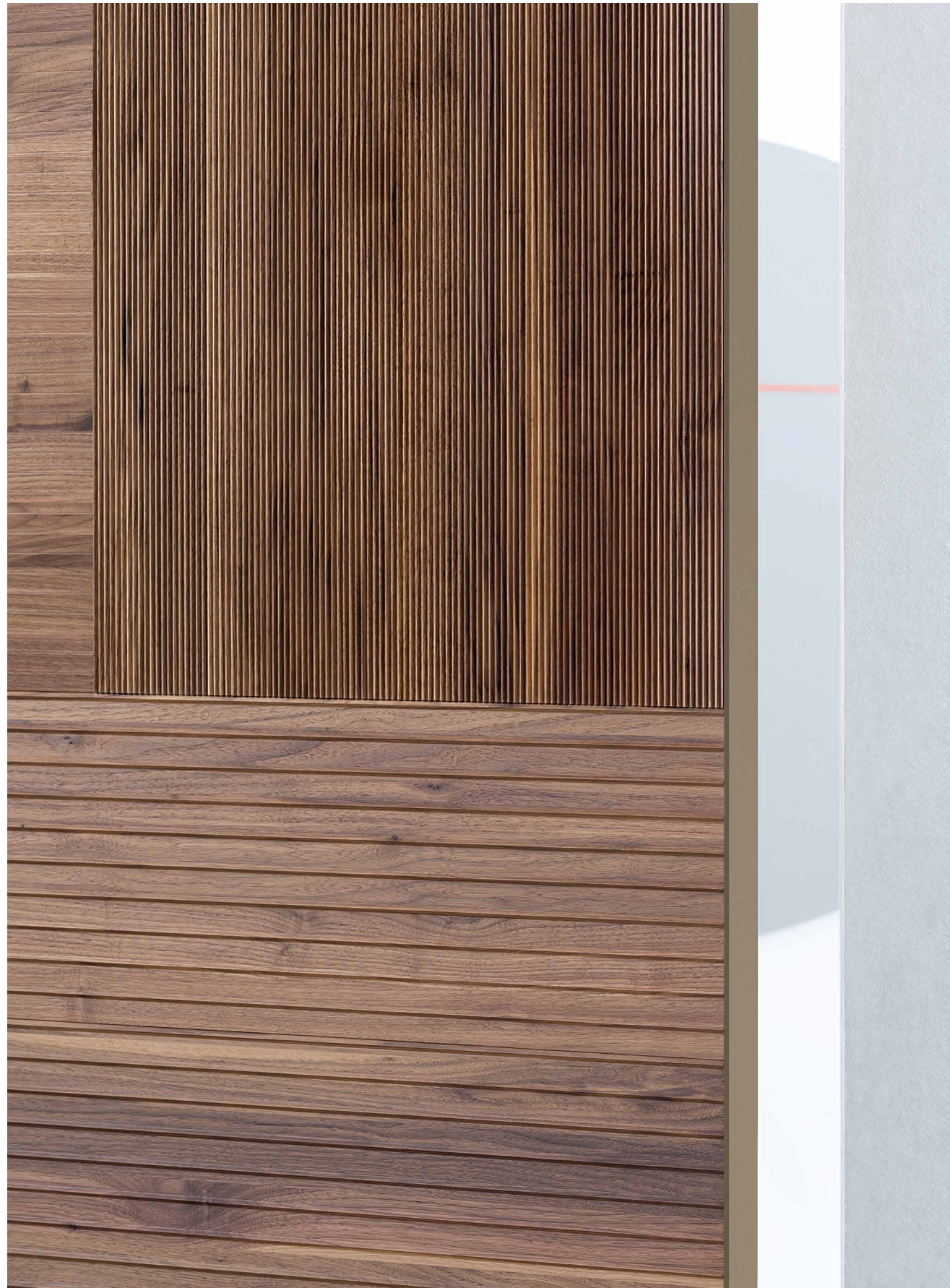


Il calore e la vita del legno vengono resi palpabili dal volume nitido dell'anta pivotante, i cui dettagli scolpiscono delicatamente la parete.

The warmth and life of wood are made palpable by the clear-cut volume of this pivoting door, whose details delicately sculpt the wall.

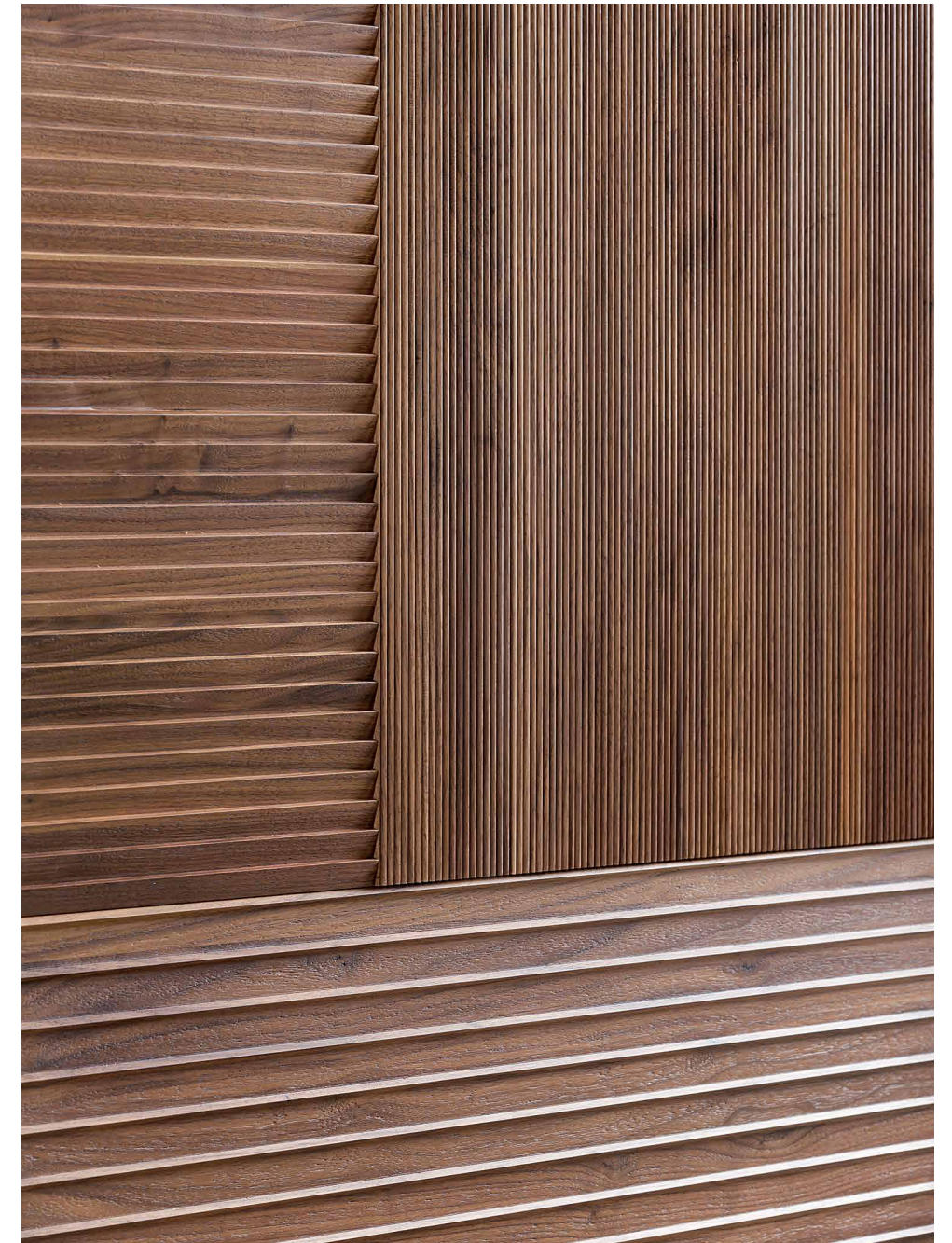






I tre diversi pattern grafici della finitura Matrix accentuano la raffinatezza della lavorazione del legno massello.

The three different patterns of the Matrix finish accentuate the refinement of the woodworking.





### **Altaj**

Altaj, disegnata da SBGA | Blengini Ghirardelli, è concepita per andare oltre il minimalismo della porta a filo muro. Il modello infatti non scompare nella parete, ma è anzi evidenziato dal profilo metallico che incornicia l'anta e ne esalta la finitura. Per le sue caratteristiche di leggerezza, Altaj si presta ad essere rivestita con materiali differenti e pregiati, dal legno al cuoio. Pivotante e con telaio in alluminio, viene proposta con finiture di pregio come le texture in legno bicolore Chocolat e l'intreccio in pelle.

Altaj, designed by SBGA | Blengini Ghirardelli, is conceived to go way beyond the minimalism of flush-to-the-wall doors. The model does not disappear into the wall but is instead enhanced by the metal profile that frames the door and projects it forward. Given its lightness, Altaj can be covered with different and precious materials, from wood to leather. Pivoting, with an aluminium frame, Altaj comes with new refined finishes such as the two-tone Chocolat wood textures and woven leather.







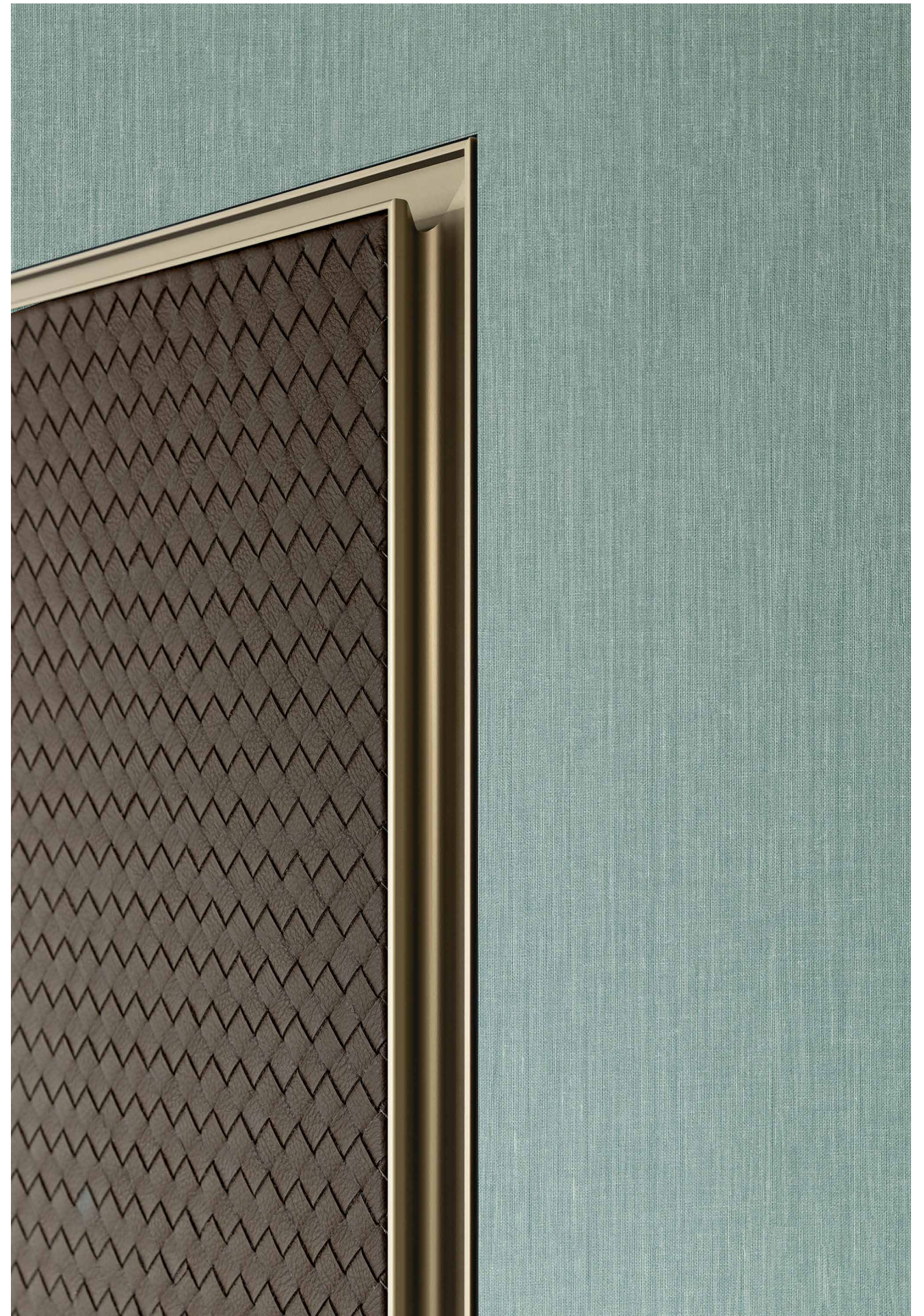
L'elegante versione di Altaj  
con i profili bronzo e l'anta  
in pelle intrecciata moro.

The elegant version of Altaj  
with bronze profiles and  
door in brown woven leather.



Materica ed elegante,  
la sofisticata versione  
di Altaj con l'anta in pelle  
intrecciata.

Materic and elegant,  
the sophisticated version  
of Altaj with door in woven  
leather.

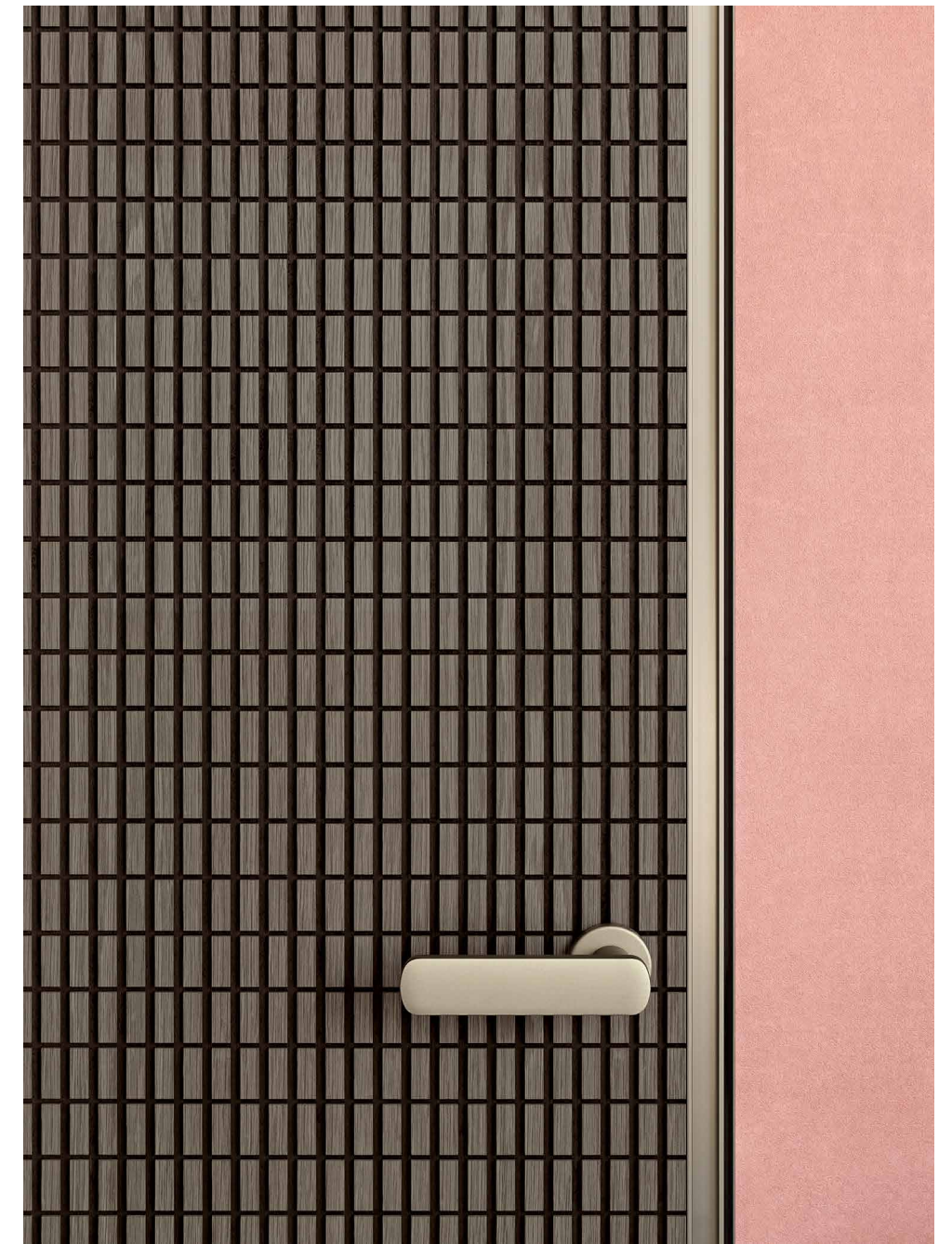




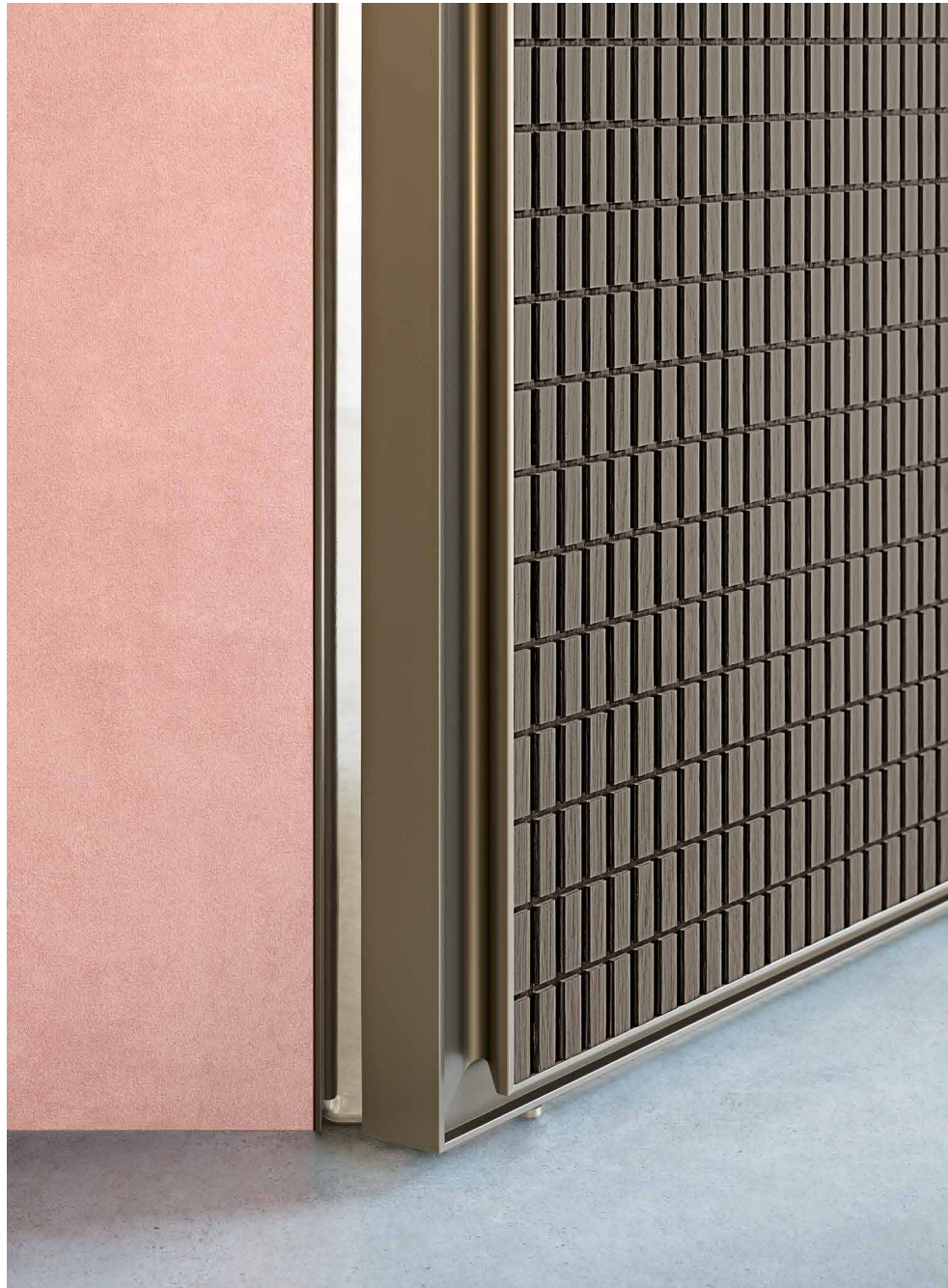


Il bordo che incornicia la superficie dell'anta portandola in aggetto crea più piani di lettura della porta.

The edge, framing the surface of the door and projecting it forward, gives the door different appearances depending on the viewing angle.

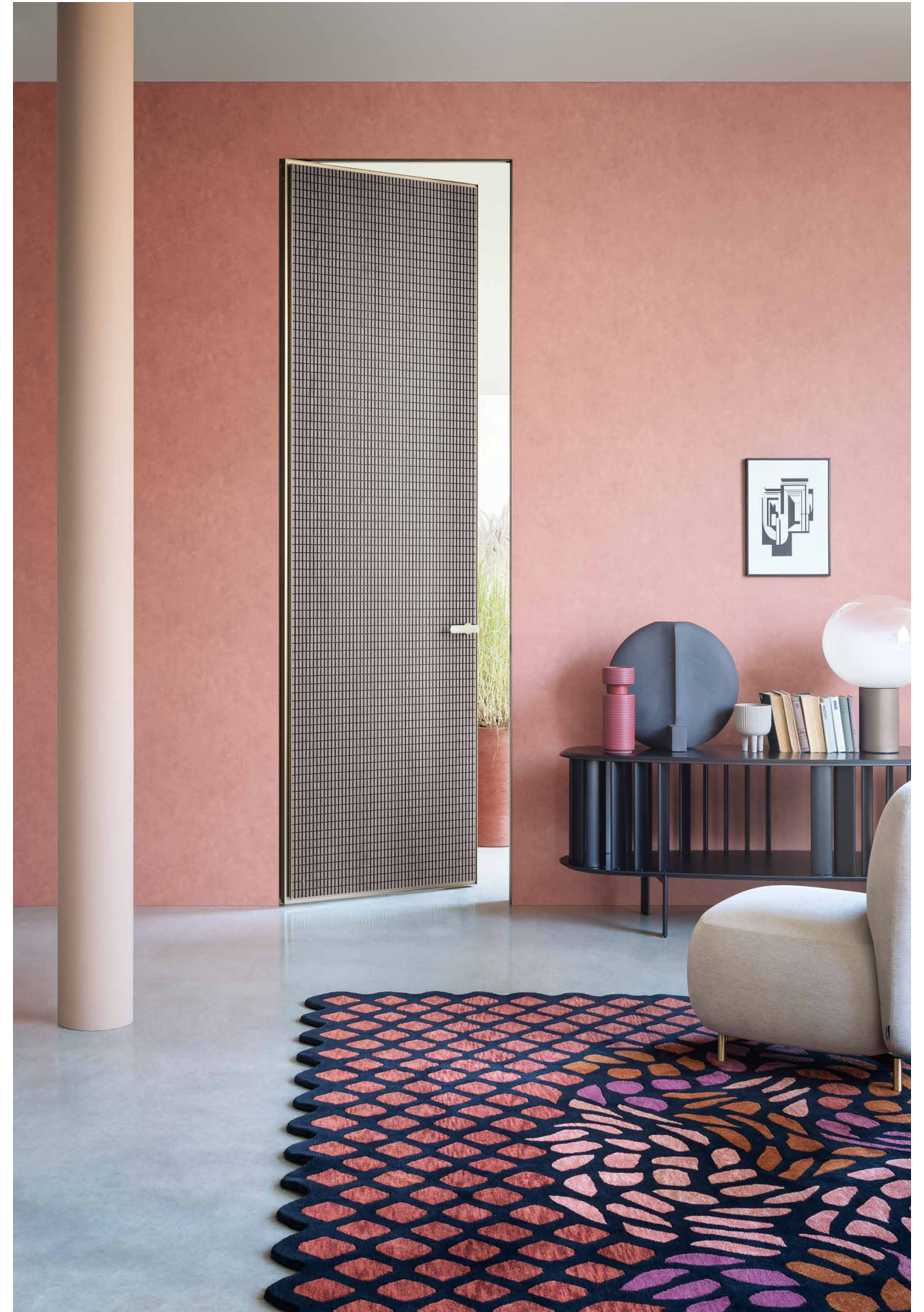






Altaj con profilo in alluminio bronzo e anta finitura Chocolat R in rovere grigio su nero fossile.

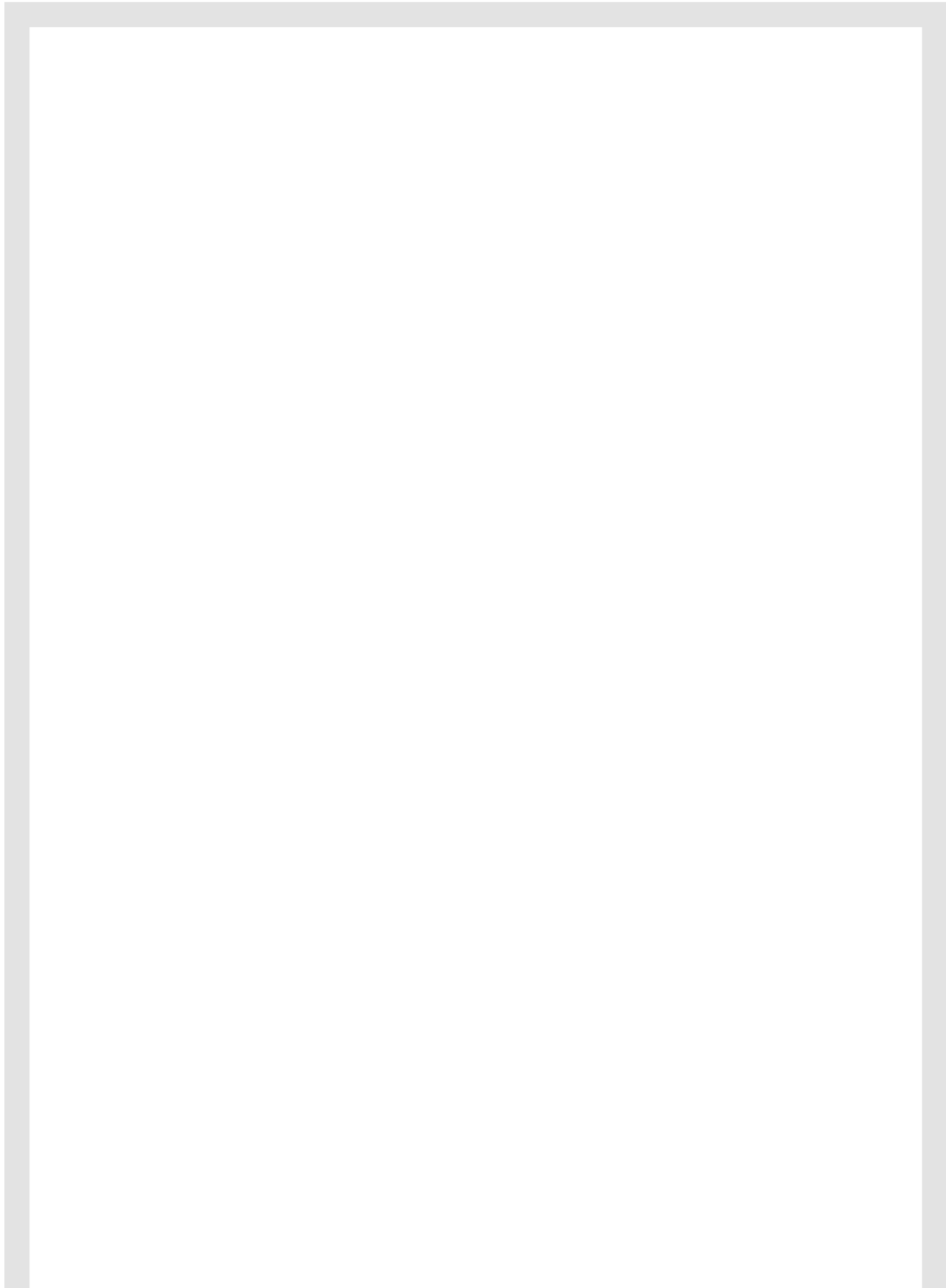
Altaj with the bronze aluminium profile and the Chocolat R finish door in grey oak on fossil black.









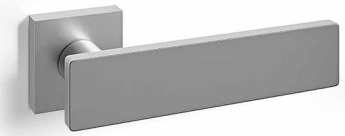


72 Handles  
76 Finishes



**Maniglie  
Handles**

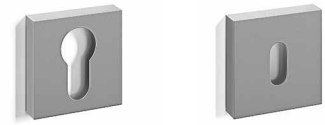
**Push&Pull**



**A**  
Maniglia Push&Pull  
cromo satinato /  
Push&Pull handle  
satin chrome



**B**  
Nottolino Push&Pull /  
Push&Pull privacy lock  
Front / Back



**C**  
Bocchetta yale /  
Yale escutcheon

**D**  
Bocchetta patent /  
Patent escutcheon

**Lualdi**



**A**  
Maniglia Lualdi  
cromo satinato /  
Lualdi handle  
satin chrome



**B**  
Nottolino Lualdi /  
Lualdi privacy lock  
Front / Back

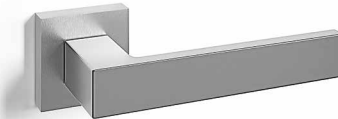


**C**  
Bocchetta yale /  
Yale escutcheon

**D**  
Bocchetta patent /  
Patent escutcheon

**Maniglie  
Handles**

**Martina**



**A**  
Maniglia Martina  
cromo satinato, alluminio, bronzo, nero,  
bianco, piombo, titanio, brown /  
Martina Handle  
satin chrome, aluminium, bronze, black,  
white, lead-grey, titanium, brown



**B**  
Nottolino Martina /  
Martina privacy lock  
Front / Back



**C**  
Bocchetta yale /  
Yale escutcheon

**D**  
Bocchetta patent /  
Patent escutcheon

**Outline**



**A**  
Maniglia Outline  
cromo satinato /  
Outline handle  
satin chrome



**B**  
Nottolino Outline /  
Outline privacy lock  
Front / Back



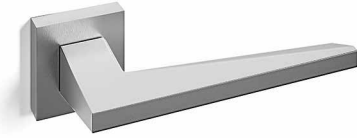
**C**  
Bocchetta yale /  
Yale escutcheon

**D**  
Bocchetta patent /  
Patent escutcheon



**Maniglie  
Handles**

**Edge**



**A**  
Maniglia Edge  
cromo satinato /  
Edge handle  
satin chrome



**B**  
Nottolino Edge /  
Edge privacy lock  
Front / Back

**Maniglia Pomm  
Pomm handle**



**A**  
Maniglia Pomm  
cromo satinato, alluminio, bronzo, nero,  
bianco, piombo, titanio, brown /  
Pomm handle  
satin chrome, aluminium, bronze, black,  
white, lead-grey, titanium, brown



**C**  
Bocchetta yale /  
Yale escutcheon

**D**  
Bocchetta patent /  
Patent escutcheon

**Ishi**



**A**  
Maniglia Ishi  
cromo satinato, alluminio, bronzo, nero,  
bianco, piombo, titanio, brown /  
Ishi handle  
satin chrome, aluminium, bronze, black,  
white, lead-grey, titanium, brown



**B**  
Nottolino Ishi /  
Ishi privacy lock  
Front / Back

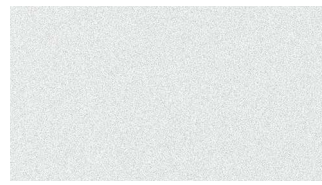


**C**  
Bocchetta yale /  
Yale escutcheon

**D**  
Bocchetta patent /  
Patent escutcheon



**Vetri  
Glasses**



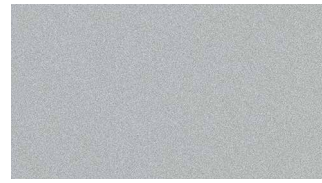
Satinato extrachiaro  
Satin extraclear



Extrachiaro riflettente  
Reflective extraclear



Grigio trasparente  
Transparent grey



Grigio satinato  
Satin grey



Grigio riflettente  
Reflective grey



Bronzo trasparente  
Transparent bronze



Bronzo satinato  
Satin bronze



Bronzo riflettente  
Reflective bronze



Extrachiaro opalino  
Opalin extraclear



Stratificato specchio  
Laminated mirror

**Vetri speciali  
Special glasses**



Mini flutes extrachiaro trasparente  
Mini flutes transparent extraclear



Mini flutes extrachiaro satinato  
Mini flutes satin extraclear



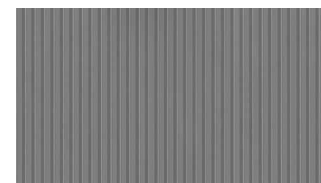
Mini flutes bronzo trasparente  
Mini flutes transparent bronze



Mini flutes bronzo satinato  
Mini flutes satin bronze

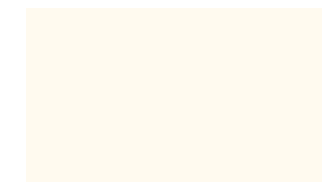


Mini flutes grigio trasparente  
Mini flutes transparent grey

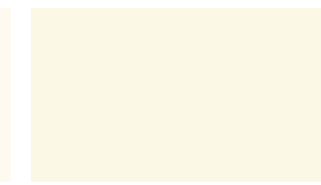


Mini flutes grigio satinato  
Mini flutes satin grey

**Vetri retrolaccati lucidi / satinati  
Backpainted glasses**



Bianco ottico  
Pure white



Bianco gesso  
Chalk white



Avorio  
Ivory



Grigio calce  
Lime grey



Grigio tortora  
Dove grey



Terra  
Clay



Grigio ferro  
Iron grey

**Profili  
Profiles**



Alluminio naturale  
Natural aluminium



Titanio  
Titanium



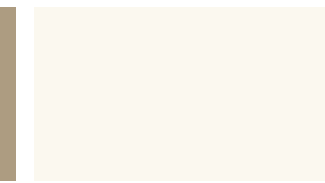
Piombo  
Lead-grey



Nero opaco  
Matt black



Bronzo  
Bronze



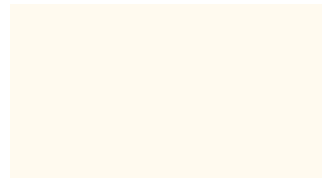
Bianco opaco  
Matt white



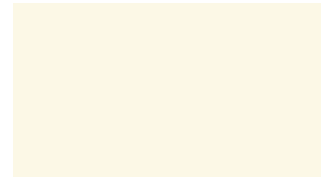
Brown  
Brown



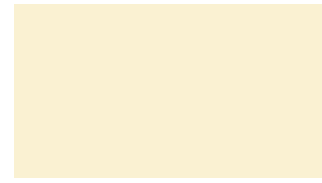
Colori laccato opaco / lucido  
Matt / gloss lacquered finish



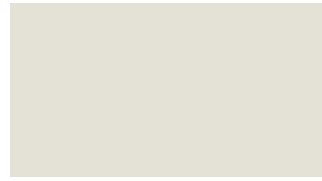
Bianco ottico  
Pure white



Bianco gesso  
Chalk white



Avorio  
Ivory



Grigio calce  
Lime grey



Grigio tortora  
Dove grey



Terra  
Clay



Grigio ferro  
Iron grey

Cuoio / Pelle  
Leather



Pelle intrecciata Moro  
Woven leather Moro



Pelle liscia tortora  
Dove grey smooth leather



Pelle liscia Moka  
Moka smooth leather



Bordeaux  
Bordeaux



Brown  
Brown

Legni  
Woods



Matrix A



Matrix B



Matrix C

Legni  
Woods



Rovere naturale  
Natural oak



Rovere sbiancato  
Bleached oak



Rovere moka  
Moka oak



Rovere thermowood  
Thermowood oak



Rovere grigio  
Grey oak



Rovere nero fossile  
Black fossil oak



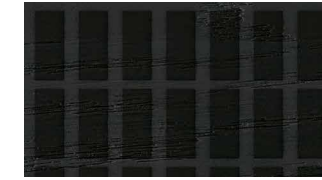
Noce canaletto  
Canaletto walnut



Chocolat R rovere naturale  
Chocolat R natural oak



Chocolat S rovere naturale  
Chocolat S natural oak



Chocolat R nero fossile  
Chocolat R fossil black



Chocolat S nero fossile  
Chocolat S fossil black



Chocolat R noce canaletto  
Chocolat R canaletto walnut



Chocolat S noce canaletto  
Chocolat S canaletto walnut



Chocolat R rovere grigio su nero fossile  
Chocolat R grey oak on fossil black



Chocolat S rovere grigio su nero fossile  
Chocolat S grey oak on fossil black



**Lualdi Spa**

Via Kennedy  
20010 Marcallo con Casone (MI)  
T. +39 02 94363000  
www.lualdi.com  
info@lualdi.com

**Showroom****Milano**

Foro Buonaparte 74  
20121 Milano  
T. +39 02 8052445  
showroom@lualdi.com

**London**

Suite 100, Princess House  
50 Eastcastle Street  
W1W8EA London  
T. +44 (0) 20434357656  
infouk@lualdi.com

**Los Angeles**

8784 Beverly Blvd, West Hollywood  
Los Angeles, CA 90048  
T. +1 310 7347088  
info@lualdi.us

**Miami**

Lualdi Inc.  
6101 Biscayne Blvd  
Miami, FL 33137  
T. +1 305 576 4333  
infomiami@lualdi.us

**New York**

180 Madison Avenue  
New York, NY 10016  
T. +1 212 334 4544  
infony@lualdi.us

a.d. Lissoni Graphx

photos Giuseppe Brancato

images Operavisual

styling Alessandra Salaris

retouching, pre press A. De Pedrini

print Grafiche Mariano 2024

**Thanks to:**

101 Cph  
Abc Italia  
Altai  
Amini  
Antonio Lupi  
Artemide  
Carré D'artistes Milano  
CC-tapis  
Draga & Aurel  
Ex.T  
Fantini Rubinetti  
Flos  
Gardeco  
Golran  
Hk Living  
Inkiostro Bianco  
Knoll  
Kristina Dam  
La Cividina  
Lema  
Les Ottomans  
Living Divani  
Lucia Mondadori  
Mani Ceramics  
Meridiani  
Miniforms  
Misha wallcoverings  
MM Lampadari  
Mohebban  
Mohebban  
Paola Zani  
Pedrali  
Porro  
Salvatori  
SEM  
Servomuto  
Texturae  
Vito Nesta per Les Ottomans  
Zanotta  
Zeus

I colori e le finiture, le illustrazioni  
e le descrizioni del presente  
catalogo sono a titolo indicativo.  
Lualdi spa si riserva il diritto di  
apportare, anche senza preavviso,  
modifiche di carattere tecnico  
e produttivo.

The colours, finishes, illustrations  
and descriptions in this catalogue  
are provided solely by way  
of example. Lualdi spa reserves  
the right to make technical  
and design changes without  
prior notice.



