



OKHA

**Candle holders
&
ROC Ceramics**

ACCESSORIES

Candleholders

1. STRATOS design A, B, C, D mild steel
2. SUPER STRATOS design A, B, C, D brass
3. SUPER STELLAR brass
4. STELLAR BLUE oxidised mild steel
5. STELLAR GREEN oxidised mild steel

Ceramics

1. ROC Sculptures



STRATOS

detail type C

Waxed mild steel & carbon brushed oak

STRATOS

The two designs in the STRATOS collection are both totemic in design, structure and meaning.

The more angular design is inspired by Mayan iconography and ritual and the concept of paying homage and giving thanks for each new sunrise, the daily emergence of the spirit of life (light) at dawn each morning.

The second more curvaceous design visually conveys the perpetual shape shifting, metamorphosis of cloud structure and formation (hence STRATOS).

type A

type C

Waxed mild steel & carbon brushed oak

STRATOS





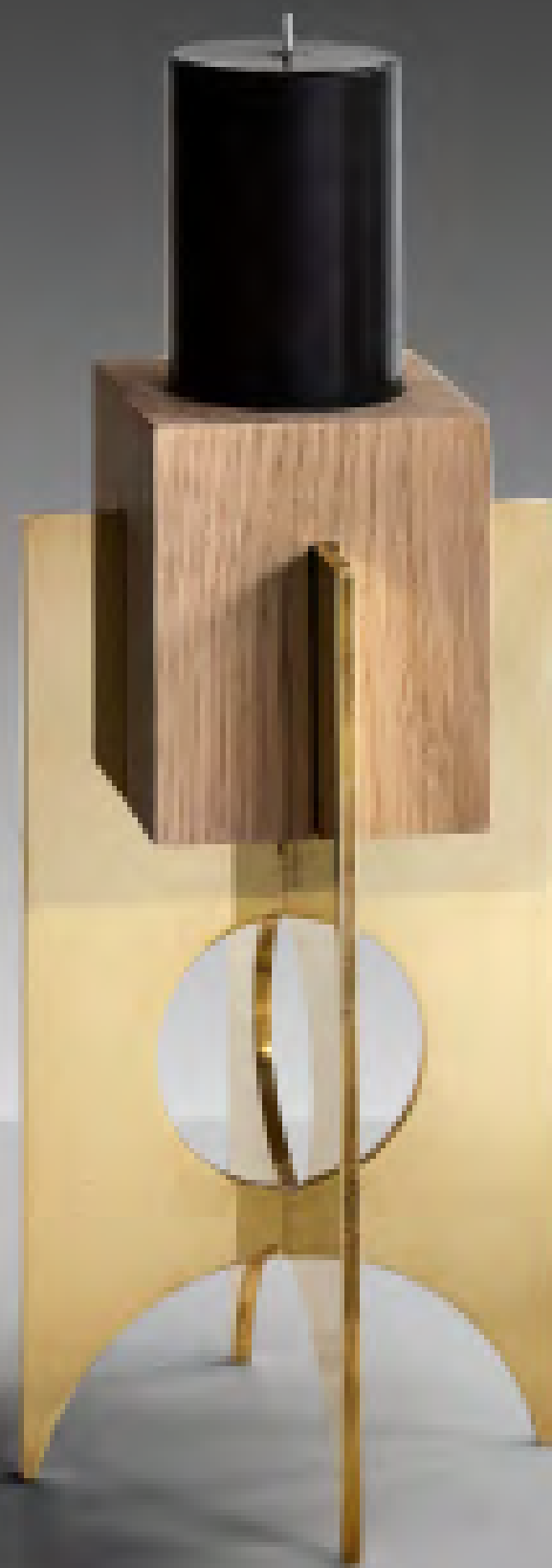
“Both designs and their inspiration explore the themes of mutation, change and the eternal cycle of life, death and rebirth.”

– Adam Court, OKHA

Physically, both structures illustrate this process; one face of each design is delicately and moderately worked whilst the opposing face is heavily transformed and in an advanced state of change / mutation / evolution; affirming that all things and all states coexist at once, rendering time without dimension, without meaning.



SUPERSTELLAR



type D



type A

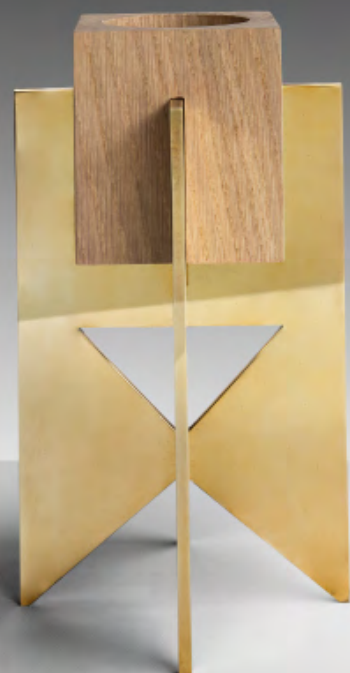
type B



Detail type C



type A



type B



type C



type D

SUPERSTELLAR

Why Stellar? Stars are the result of a heated compression of inter-relational forces: a fusion reaction resulting in the birth of a new star...the same description can be applied to many elements, including human nature; the often fascinating and unpredictable results of bringing opposing elements and forces together to give life to a new entity, form or perspective.

STELLARBLUE

“The dynamics of opposing forces; two intersecting planes collide to create new perspectives and alternative dimensions.”
– Adam Court, OKHA

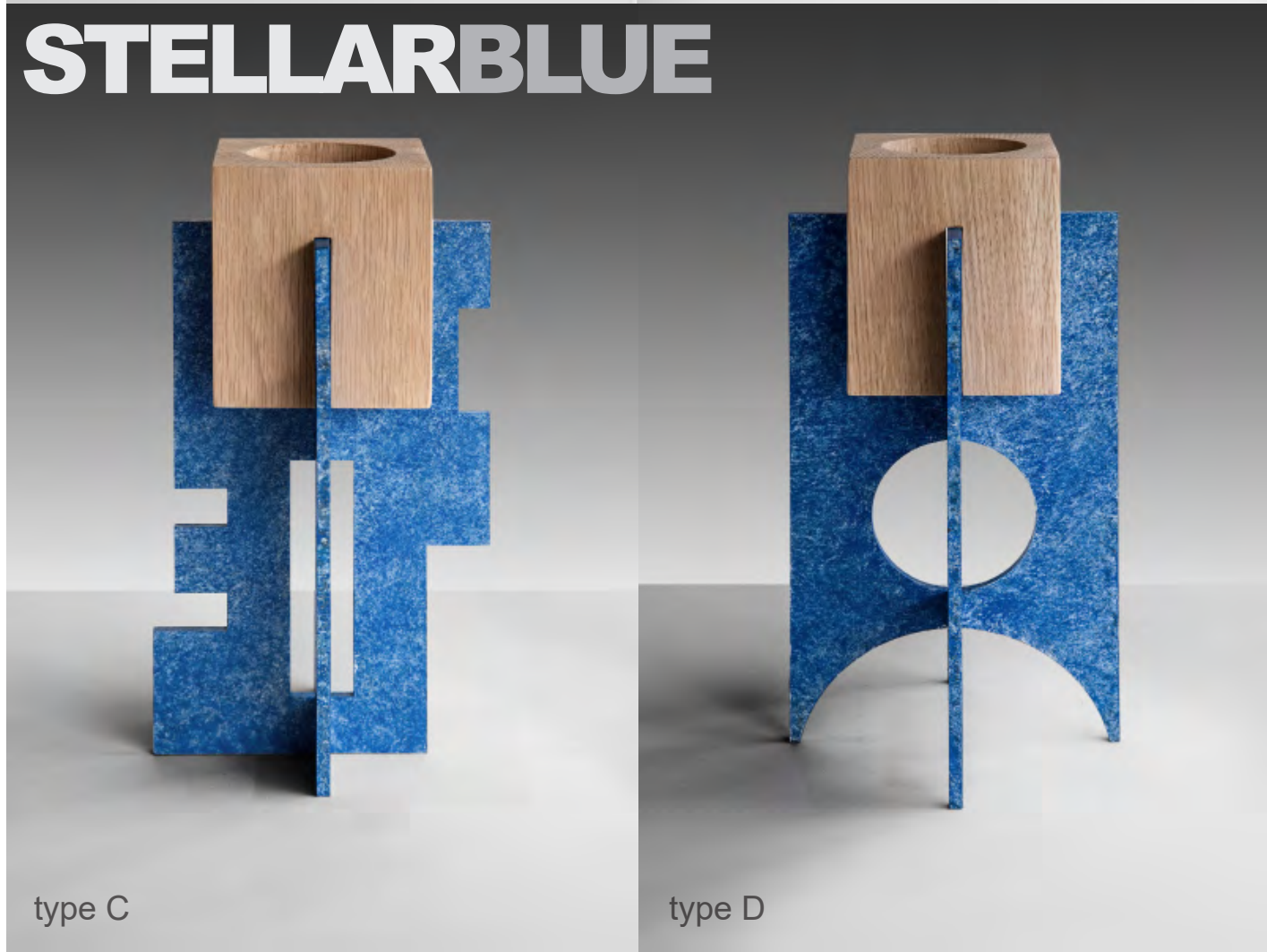


type C



STELLARGREEN

Oxidised mild steel & brushed oak



ROC ceramics



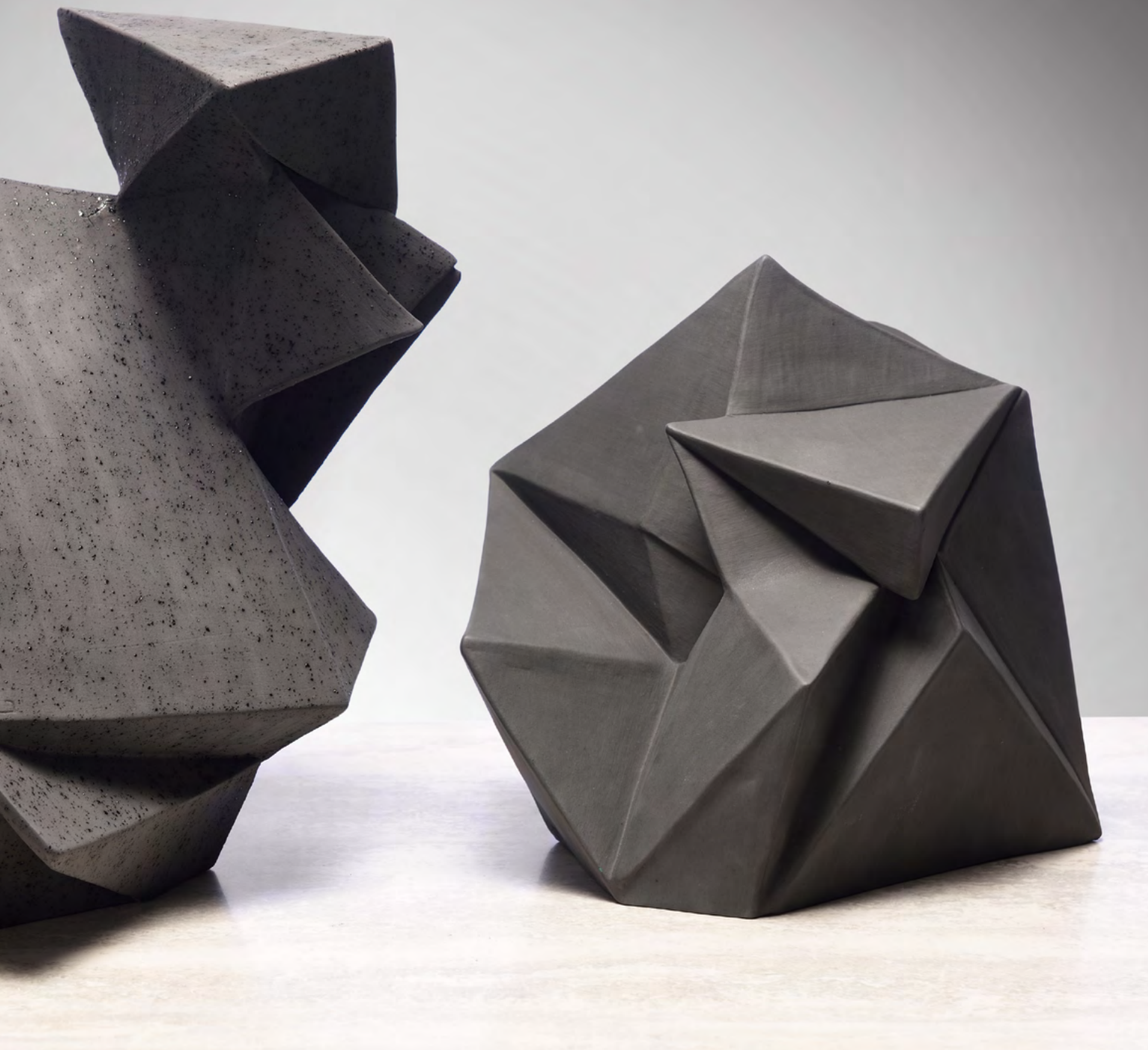
ROC

"Bheke"
ceramic and glase
320w X 240d X 500h



ROC ceramics

Metal oxide burnished ceramic



"Waz'uthando"
ceramic and glaze
280w x 240d x 280h

ROC

Chantel Woodman's
Rock Sculptures
evoke fossilised crystal
formations, they remind
us of the structural
order and disorder
embedded in nature.



"Ayanda"
ceramic and glaze
460w x 320d x 360h



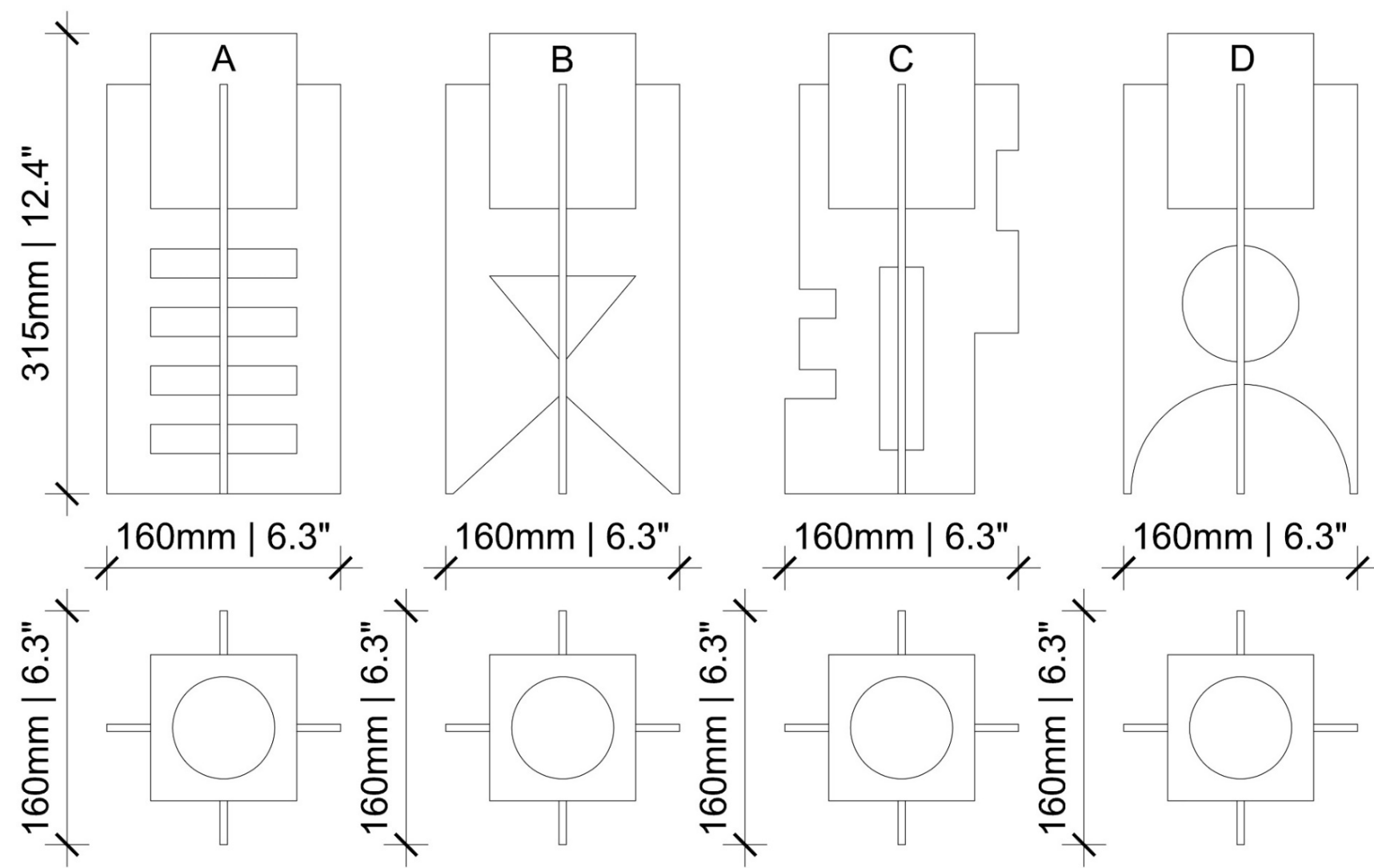
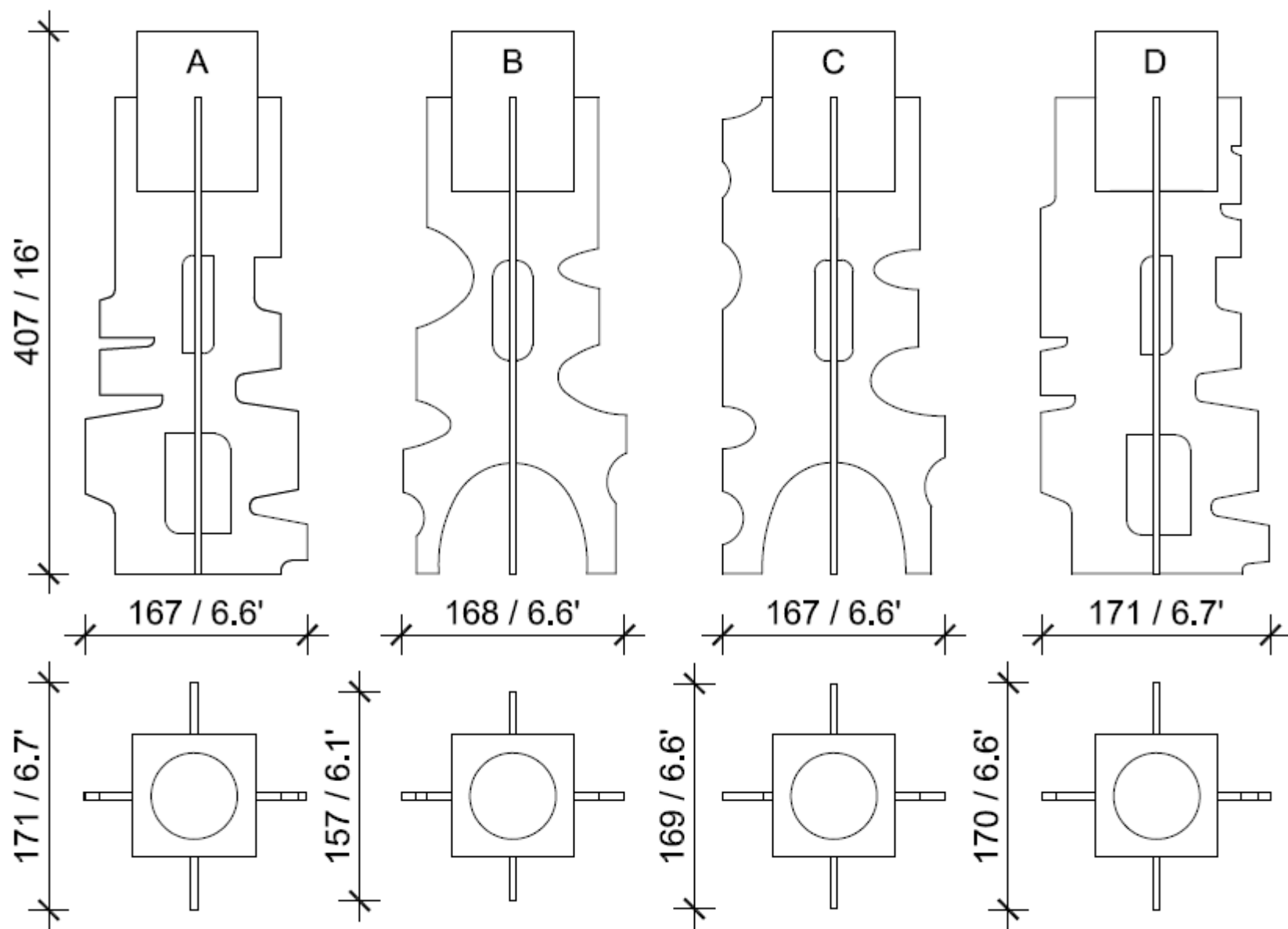
ROC dimensions

All pieces are hand made, one off works.

Sizing varies from: 500w x 400d x 400h to 280w x 240d x 280h

ROC

"Ayanda"
ceramic and glaze
460w x 320d x 360h



STRATOS & SUPERSTRATOS
dimensions

STELLAR & SUPERSTELLAR
dimensions

CREDITS

Photography

1. Adam Court
2. Niel Vosloo
3. Mickey Hoyle
4. Pete Maltbie

Text

1. Adam Court
2. Anastassia Meeran



OKHA
ACCESSORIES BY HAND

OKHA

CAPE TOWN



okha.com



info@okha.com



+27 21 461 7233

109 Hatfield Street Gardens Cape Town 8001 South Africa